

MINISTRY OF CULTURE OF THE CZECH REPUBLIC

Ministry of Culture
Czech Republic



CONCEPT FOR MORE EFFICIENT SUPPORT OF THE ARTS IN 2007–2013

MINISTRY OF CULTURE OF THE CZECH REPUBLIC

2006

CONCEPT FOR MORE EFFICIENT SUPPORT OF THE ARTS IN 2007–2013

Contents¹

Preface	7
Resolution of the Government of the Czech Republic No. 676 as of 31st May 2006	8
Annex to the Resolution of the Government of the Czech Republic No. 676 as of 31st May 2006	9–10
Submission Report	11–13
Concept for More Efficient Support of the Arts in 2007–2013	
Introduction	14–15
A) An Analysis of the Current Situation	16–64
1. Recent Basic Developmental Trends and Their Evaluation	16–46
2. Strengths and Weaknesses, Opportunities and Threats (SWOT Analysis)	47–51
3. Evaluation of the Efficiency of Existing Development Programmes	52–64
B) Concept	65–83
I. Targets	65
II. Objectives	65
III. Instruments	66–69
IV. Specific Tasks	70–75
a) Strengthening the Role of the Arts in Society	70–72
b) Protection and Enhancement of Artistic Diversity and Creativity with Respect to Reduction of the Negative Influences of Consumer Society	73–74
c) Guaranteeing Public Access to the Arts (Equal Access)	74–75
d) Strengthening Infrastructure and Investment Support for Cultural Institutions	75
e) Strengthening the Presence and Presentation of Czech Arts Abroad and Fostering International Cooperation	75–76
V. Financial Requirements from the State Budget	77–83
Appendices	84–89
I. Expert and Working Groups	84–86
II. Share of Total Public Expenditures on Culture according to Type of Administrative Division	87–89

¹ The structure of this document conforms with the format requirements established in Resolution No. 10 of the Government of the Czech Republic on the Methodology of Mid-Term Concepts dated 3rd January 2001.

Preface

The Government of the Czech Republic adopted the Concept for More Efficient Support for the Arts in 2007–2013 in Government Resolution No. 676 of 31st May 2006 and thereby charges upon the representatives of state administration in cooperation with the regional authorities to implement the Concept. The Concept was circulated not only to the mandatory bodies for comments but also to the regions and a number of professional organisations, and all substantial comments and most recommendations were incorporated into the Concept.

In compliance with the procedure established in Resolution No. 10 of the Government of the Czech Republic dated 3rd January 2001, the Concept was developed as a mid-term document and is designed to supplement existing concepts in the other fields of culture. It also ties in with the Ministry of Culture's prior key policy document – the Concept for a Cultural Policy in the Czech Republic. The Ministry elaborated the Concept for More Efficient Support for the Arts in 2007–2013 on the basis of materials drawn from a broad spectrum of relevant professionals and experts, developed under the direction of the Theatre Institute.

The objective of the Concept is to establish the requisite conditions for free creative expression and the presentation of artistic work, including critical reflection and study of such work, and the preservation of such works as cultural heritage for future generations. Equally important is the task of facilitating the continued development of artistic activities and the work of cultural entities, so that access to art is guaranteed to all citizens. The document covers all basic artistic fields: theatre, music, film, literature, dance, visual arts, at the professional and non-professional level, and extending into cooperation with entities outside the Czech Republic and the presentation of Czech art abroad.

The final report on the fulfilment of the Concept, together with a proposed update of the Concept, will be submitted to the Government of the Czech Republic by 31st March 2014.

RESOLUTION
OF THE GOVERNMENT OF THE CZECH REPUBLIC
of 31st May 2006, No. 676

on the Concept for More Efficient Support of the Arts in 2007–2013

The Government

I. a d o p t s the Concept for More Efficient Support of the Arts in 2007–2013, included in Part III of Document reference no. 700/06 (hereinafter “the Concept”);

II. c h a r g e s u p o n

1. the Minister of Culture

- a) to ensure that the regional chief executive officers, the Lord Mayor of Prague, the mayors of statutory cities, the representatives of the Union of Cities and Municipalities, and representatives of professional organisations in the field of the arts are fully informed and acquainted with the Concept,
- b) to implement the Concept in cooperation with other members of the Government, heads of other central state administration bodies, regional chief executive officers, and the director of Prague City Hall,
- c) to prepare and submit to the Government interim reports on the fulfilment of the Concept, and to do so no later than
 - ca) 31st March 2010,
 - cb) 31st March 2012,
- d) to prepare and submit to the Government no later than 31st March 2014 a final report on the fulfilment of the Concept and a proposed update of the Concept,
- e) in cooperation with the 1st Deputy Chair of the Government and the Minister of Finance to secure in the preparation of the state budgets in 2007–2013 the requisite financial resources for the implementation of the Concept in accordance with the Annex to this resolution,
- f) to ensure the publication of this resolution in the Government Bulletin for regional and municipal authorities,

2. members of the Government and other heads of central state administration bodies to cooperate with the Minister of Culture in the implementation of the Concept;

III. r e c o m m e n d s to the regional chief executive officers, mayors of statutory cities and community mayors of municipalities to acquaint themselves with the Concept and to utilise it in the preparation of documents and in the fulfilment of objectives aimed at supporting the arts under their competence.

Responsible parties:

Members of the Government,
Heads of other central state administration bodies,
Directors of the regional authorities,
Director of Prague City Hall

Copy to:

Regional chief executive officers,
Lord Mayor of Prague

Prime Minister
Ing. Jiří Paroubek (d. s.)

Annex to the Government Resolution No. 676 as of 31st May 2006

Total planned expenditures for the implementation of
the Concept for More Efficient Support of the Arts in 2007–2013

Current Programmes

In millions of Czk

Year	Cultural Activities Programme	Programme of State Support for Professional Theatres, Symphony Orchestras, and Choirs...	Programme of Support for the Integration of the Roma Community	Programme of Support for the Cultural Activities of Ethnic Minorities	TOTAL
2006	365.10	38.75	2.00	8.00	413.85
2007	365.10	120.00	3.00	15.00	503.10
2007–2006	0.00	81.25	1.00	7.00	89.25
2008	366.20	125.00	3.00	15.00	509.20
2008–2006	1.10	86.25	1.00	7.00	95.35
2009	429.80*	130.00	3.50	16.00	579.30
2009–2006	64.70	91.25	1.50	8.00	165.45
2010	426.90	135.00	4.00	17.00	582.90
2010–2006	61.80	96.25	2.00	9.00	169.05
2011	496.00**	140.00	4.50	18.00	658.50
2011–2006	130.90	101.25	2.50	10.00	244.65
2012	509.00	145.00	5.00	19.00	678.00
2012–2006	143.90	106.25	3.00	11.00	264.15
2013	519.50	150.00	5.00	20.00	694.50
2013–2006	154.40	111.25	3.00	12.00	280.65
TOTAL programmes	3 112.50	945.00	28.00	120.00	4 205.50
TOTAL increased requirements	556.80	673.75	14.00	64.00	1 308.55

* Increased requirements in connection with projects in the frameworks of the Czech presidency of the EU.

** Increased requirements in connection with the Prague Quadrennial.

New Programmes

In millions of Czk

Year	Stipend Programme	Programme of State Support for Galleries, Museums and Exhibitions	TOTAL
2007	9.5	30	39.5
2008	10.5	35	45.5
2009	12.5	40	52.5
2010	14.5	45	59.5
2011	16.5	50	66.5
2012	19.5	55	74.5
2013	22.5	60	82.5
TOTAL	105.5	315	420.5

II.

Submission Report

Pursuant to Resolution No. 1652 of the Government of the Czech Republic dated 21st December 2005 on the Plan of Non-Legislative Tasks of the Government of the Czech Republic for the first half of 2006 and on the Summary of Proposals for the Plan of Non-Legislative Tasks of the Government of the Czech Republic for the second half of 2006 the Ministry of Culture (hereinafter "MC") shall submit the Concept for More Efficient Support of the Arts in 2007–2013 to the Government for adoption.

The MC and other bodies of state administration and of regional administration allocate financial resources in support of the arts according to the means available to them in the public budgets. This financial support from public resources is inadequate when compared to the level of support in equally advanced countries of the EU, but moreover the funds are not always provided in the most effective or optimal manner. The Concept proposal aims to eliminate this flaw to some degree by proposing new and updated methodological procedures that allow more attention to be devoted to the field of the arts and through systemic programme financing make more effective use of public resource expenditures in this sphere. Given the current state of support for the arts, the Concept also formulates priorities through which it endeavours to achieve a synergistic effect and in some specific areas to make effective potential use of EU funds.

The goal of the Concept is to establish the conditions for free creative expression and the presentation of works of art, including critical reflection and study of the arts, and the preservation of these works as cultural heritage for future generations. Equally important is its task of ensuring the continued development of artistic activities and the work of cultural entities so that every citizen is guaranteed equal access to the arts. The document covers all basic artistic fields: theatre, music, film, literature, dance, visual arts, at the professional and non-professional level, and extends to cooperation with entities outside the Czech Republic and the presentation of Czech art abroad.

The Concept proposal summarises the principal measures to be applied in the field of the arts in the Czech Republic, proposes the procedures for their implementation, and establishes the areas of responsibility for the execution of specific tasks. The first part of the document contains an analysis of the arts from the start of the 1990s to the present, includes basic statistical information, and describes strengths and weaknesses, opportunities and threats (SWOT analysis) in the sphere of the arts. This is followed by a summary and an assessment of the subsidy titles and programmes for the support of the arts operated and financed by the state. The Concept itself defines the course of development in the arts for the next seven years and the main body of the document contains a description of almost three-dozen successive steps and targets to achieve the objectives laid out in the Concept. The document also includes a statement of the necessary financial costs.

The Concept proposal was elaborated in compliance with the methodology adopted in Resolution No. 10 of the Government of the Czech Republic, dated 3rd January 2001, and as a mid-term procedural document it is proposed for the years 2007–2013. It thus supplements several other concepts drawn up in other fields of culture. The Ministry elaborated the Concept on the basis of materials drawn from a broad spectrum of relevant professionals and experts, materials that were compiled under the direction of the Theatre Institute.

The Concept Proposal is planned for the second programme period of the EU Structural Funds 2007–2013, as this period will offer the first real opportunity to the arts to draw financial resources from the Structural Funds.

Effect on the State Budget

In 2007–2013 the estimated impact on the state budget in the area of programme financing for supporting development in the sphere of the arts and ensuring access to the arts for all citizens of the Czech Republic is a total sum of 1.729,05 mil. Czk.

Coverage of the Concept's funding requirements will be incorporated into the State Budget Proposal and into the Ministry of Culture's budget chapter 334 for 2007, including mid-term outlooks for the expenditure limits of the state budget and for the field of culture.

On 14th March 2006 the document was submitted for inter-departmental comment procedure to all members of the Government, regional chief executive officers, the Lord Mayor of the City of Prague, the Union of Towns and Municipalities of the Czech Republic, and selected professional associations; their views and the settlements are contained in Part IV of the document. Settlements to the comments were reached and the document is submitted in contradiction of only one comment, that of the Ministry of Finance requesting the omission from the proposed resolution Point II e) on cooperation between the 1st Deputy Prime Minister of the Government and the Minister of Finance in securing the requisite financial resources for implementing the Concept, given that the Concept must be implemented within the framework of approved budgets and the mid-term outlooks for the relevant years.

The Ministry of Culture disagrees, as each year it submits its requirements within the framework of the standard budget procedure for increasing expenditures in the budget chapter of the Ministry of Culture, especially targeted expenditures on programmes and programme areas. Nevertheless it has not been possible to achieve an increase from the previous year in the target figure for chapter expenditures. Owing to the relative reduction of the target figure and given the necessity of first covering mandatory expenditures, the expenditures on programmes and programme areas are decreasing.

When drawing up the budget for the next budget year the MC must first secure resources for so-called mandatory expenditures:

- The personnel costs of the governmental organisations under the Ministry of Culture, authorities, churches, and religious organisations
- Expenditures on research and development
- Material expenses of the governmental organisations under the Ministry of Culture, authorities, churches, and religious organisations, and the maintenance of the property of churches and religious organisations
- Expenditures on asset renewal – ISPROFIN programme financing

These expenditures represent a substantial portion of the Ministry's budget. The percentage these expenditures constitute in relation to total expenditures is growing; for example, in the approved budget for 2003 they comprised 65.67% of the total budget, and in the approved budget for 2006 the figure is 80.40%. This means that expenditures on programme areas represent a decreasing percentage of the Ministry's total expenditures; for example, these expenditures accounted for 34.33% of the total budget and in the approved budget for 2006 the figure is 19.60%. Owing to the continuous decrease in the target figure, other documents approved by the Government are unfortunately not being successfully fulfilled, such as the Concept of the Development of Libraries in the Czech Republic for 2004–2010, the Concept for More Effective Conservation of Traditional Folk Culture, or the Programmes of State Support for Professional Theatres and Professional Symphony Orchestras and Choirs, and Support for the Acquisition Work of Museums and Galleries, set up by the Ministry of Culture for the years 2004–2008.

The percentage of expenditures relegated for cultural activities out of total expenditures in the Ministry's approved budget for 2006 is 5.74%, and that is the highest amount out of all the programmes and programme areas. Nevertheless, it is not enough to provide for the tasks arising out of the submitted Concept for More Efficient Support of the Arts in 2007–2013. The second largest percentage is for the Programme for the Conservation of Architectural Heritage (5.21%). The percentages for the other programmes out of the Ministry's total expenditures are substantially lower (Programme for the Regeneration of Urban Conservation Areas and Urban Conservation Zones 2.54%, Integrated System for the Conservation of Movable Cultural Heritage 1.78%, the others receive less than one percent).

Concept for More Efficient Support of the Arts in 2007–2013

Introduction

Art is a fundamental part of human life and culture. It contributes to the formation of our identity and plays an important role in shaping the values that are recognised and respected in any given society. Art is considered a force that has the power to transform man and society and to introduce new ideas, stimuli, and ways of thinking, about ourselves and about the society we live in, and it creates new opportunities for ongoing personal and social development.

Art **shapes and forms our cultural heritage**. It is a treasured and precious asset, manifesting talent, creativity and personal disposition, and as such it is protected and conserved and its development supported.

The arts and culture in general enhance the public sphere by improving the quality of life and they are an integral **component of sustainable development² and the conditions conducive to the stability of society**. Arts regenerate society, articulate and interpret knowledge, shape life styles, fulfil an identifying function, are a source of entertainment and leisure-time activity, contribute to the mental and physical health of the population and the overall social environment in the country, and are a medium that appeals to young people and helps shield them against the effects of various negative influences and dependencies. They are also an important factor in combatting and deterring the emergence of socio-pathological phenomena, such as racism, ethnic hatred, and prejudices targeting the disabled, the ill, the elderly, and minorities, while at the same time help to overcome and eliminate prejudice and intolerance.

The arts are also an important **economic factor³**, on which the development of new and economically progressive fields, such as cultural and creative industry, depends. Works of art, including architecture, and the institutes that house and exhibit them, are important destinations of cultural tourism. The tourism sector obtains an income through the arts that in is *similar in economic character to an annuity*.⁴ Owing to the financial resources attached to art and art production, the arts also help stimulate economic growth and development at the local level through co-productions and through various forms of cooperation at the regional, supra-regional, and international level, and involve important multiplication effects, manifested in the links and ties to all sorts of other services that are generated through art.

Support for the arts is based on the commitment to protect and cultivate inherited cultural, material, and intellectual wealth and to foster the Czech Republic's development while observing the inviolable values of human dignity and freedom.⁵ By supporting cultural production,

² See the National Sustainable Development Strategy of the Czech Republic (Resolution No. 1242 of the Government of the Czech Republic dated 8th December 2004).

³ See the Economic Growth Strategy of the Czech Republic (Resolution No. 1500 of the Government of the Czech Republic dated 16th November 2005).

⁴ Ibid.

⁵ See the Preamble to the Constitution of the Czech Republic

non-commercial artistic exchanges, and the preservation of cultural heritage the Czech Republic is helping to shape the European cultural space.⁶

The presentation and promotion of the arts and culture beyond the borders of the country is an important **foreign policy tool**.⁷ At a time when there is increasing need for intercultural communication the arts contribute enormously to fostering an understanding between different cultures. They help mitigate and overcome international disputes and conflicts, surmount language barriers and obstacles, and encourage the development of political, economic and human contacts between peoples and states.

An arts sector that evolves with diversity and vigour is a precondition for a quality civil society and thus for the quality of life of us all. Given the fact that the basic precondition for artistic creation is freedom of creative expression, works of art and their reflection in society are generally perceived as an **indicator of the quality of democracy and civil society in a country**.

⁶ See the Treaty of Amsterdam, ratified by all EU member states, which came into effect on 1st May 1999.

⁷ See the Concept for the Unified Presentation of the Czech Republic (Resolution No. 74 of the Government of the Czech Republic dated 19th January 2005).

Part A

AN ANALYSIS OF THE CURRENT SITUATION

1. Recent Basic Developmental Trends and Their Evaluation

Since 1989 the arts have experienced dramatic changes in connection with the general post-Communist transformation of society and the accompanying processes of the restitution and privatisation of property, the transformation or dissolution of artistic organisations, and the essentially spontaneous formation of a new infrastructure through civic initiatives and business projects, all of which occurring within a new legislative framework. At the start of the 1990s cultural heritage was made a priority, in particular the conservation of cultural monuments, which at that time were in a derelict state, and the arts were largely guided by efforts to annul and eliminate⁸ the administrative obstacles to artistic work. Without anything arising to replace them, the monopolistic bodies and regulatory mechanisms that until 1989 had provided the financial resources for reinvestment and for financing of projects within the integrated and centrally controlled systems of individual artistic sectors were abolished.

The Rise of Civic Associations

A key turning point in the sphere of culture and the arts was the introduction of the new Act No. 83/1990 Coll. on the Association of Citizens, which laid the foundations for the establishment of a civil society and made it possible for cultural and artistic civic associations to be founded. An important step towards “de-nationalising” culture and the arts was the emergence of private legal entities in this sphere, whose activities are regulated under Act No. 455/1991 Coll. on Small Business (the Small Businesses Act), as subsequently amended, and Act No. 513/1991 Coll., the Commercial Code, as subsequently amended.

The Demise of Artistic Unions

One of the first major changes to occur as part of the transformation process in the field of the arts was the dissolution of federal and national artistic unions, membership in which had – in some branches – been considered a requirement in order for an artist to obtain professional status. After 1990 new professional organisations began to emerge, some of which drew on and revived a pre-war tradition of existence as an organisation, e. g. the Society of Architects (Obec architektů), or renewed their activities by being founded anew, like the Czech Film and Television Association (Unie Českého filmové svazu a Českého televizního svazu, FITES), whose predecessor, the Union of Czechoslovak Film and Television Artists (Svaz čs. filmových a televizních umělců, also FITES), had been abolished in 1970. The largest artistic community was that of the visual arts, which transformed itself – at a conference and later a special meeting (1990) of the Union of Czech Visual Artists (Svaz českých výtvarných umělců, SČVU) – into a federation of associations, i. e. professional associations defined by field, region, or interest. The legal successor to the SČVU was the Union of Visual Artists (Unie výtvarných umělců, UVU, today UVU ČR); this organisational succession included the transferral of membership in the International Association of Art IAA/AIAP (UNESCO). By agreement with the Slovak Union of Visual Arts (Slovenská výtvarná unie, SVU) the federal Union of Czechoslovak Visual Artists (Svaz čs. výtvarných umělců, SČSVU) was dissolved. Initially the visual arts community encompassed the fields of

⁸ Based on a Government declaration made by Prime Minister Petr Pithart on 2nd June 1990.

architecture, art restoration and restorers (craftsmen), and art theorists and art historians, which added up to ten thousand people in total. The Union embraced a total of 70 associations, and today about one-half of the artistic community is associated under it. Soon after these changes a process of individualisation and disintegration set in that has continued to date.

In 1992, when the process of establishing a democratic society was already under way, the principle that began to become apparent in the arts was that it is not the state or any individual artistic or cultural institution that are sovereign in the artistic sphere but rather the individual that cultural assets are intended for.⁹ The principle of “de-nationalising” culture was based on the simple conviction that the state should not be running the arts. This idea produced the view that at best the state can run national institutions (e. g. the National Theatre, the National Gallery in Prague, the Czech Philharmonic Orchestra, the National Film Archives, the Museum of Applied Arts in Prague, the Museum of Czech Literature, the National Library of the Czech Republic) and control over everything else should be ceded to the control of the municipalities (later also the regions) and to civic actions and initiatives. In the mid-1990s programmes and systems for subsidising the arts began to be formalised at the state level, but the form of this support was project-based and not institutionalised. The majority of the financial resources going into support for the arts were still provided through governmental organisations of the Ministry of Culture (hereafter “MC”).

The Transformation of Individual Artistic Organisations

The transformation of artistic organisations commenced at the start of the 1990s and involved the privatisation and liquidation of a large number of organisational entities. Publishers and institutions engaged in the production of music and film were privatised in the first wave of privatisation. In the fields of theatre and music, after privatisation and the subsequent change of founding party, the original network of theatres and symphonic orchestras was left almost intact, and in some cases even the governmental organisations were transformed into other types of entities, whereby gradually new types of private legal entities were added to the original network. The visual arts underwent a similarly complex process of transformation and development.

- Visual Arts

A good number of organisations and enterprises in the field of visual arts, architecture, and design were privatised; for example, the former state enterprises ARTIA, Exhibition Management (Výstavnictví), Technoart, Dizart, Artcentrum, Institute of Folk Art (ÚLUV), Brno Arts and Crafts (Umělecká řemesla Brno), or Arts and Crafts Central Prague (Ústředí uměleckých řemesel Praha). The privatisation and restitution of the national chain of galleries called Work (Dílo) led to its demise, which, given that this chain of galleries had previously functioned as a platform for the exhibition and distribution of contemporary art, gave rise to a problem that has yet to be addressed. As a consequence, in the early 1990s, art suddenly became relegated to the space of governmental, i. e. public-type, museums and galleries, whereby the unique role played by galleries in identifying and distributing works of art, through their sale of works to private owners and public collections and through the provision of organisational services for artists, as is the custom elsewhere in the world, was stifled. Galleries that organise exhibitions for artists and mediate the sale of their works had yet to be established and they were to emerge purely in conformity with market principles and with practically no chance of support. This, together with the transformation of the fund that previously administrated the property of the artistic community, as described on the following pages, seriously complicated further development in the visual arts (see page 22).

⁹ From a Government declaration made by Prime Minister Václav Klaus on 13th July 1992.

- Music

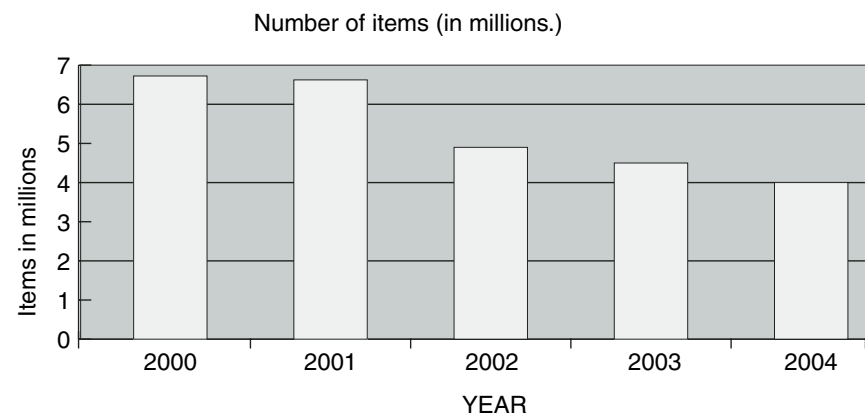
In the field of music, almost all symphony orchestras were “de-nationalised” as part of the transformation in the early 1990s – in the first stage of reform of public administration – in accordance with Act No. 172/1991 Coll. on the Transfer of Ownership Title of Certain Assets from the Czech Republic to the Municipalities.

Publishing and production spheres in the field of music were privatised in the very first wave of privatisation. This involved Bohemia Video Arts, Supraphon (sound recordings), Edition Supraphon (music news, books on music) and Gramophone Enterprises Loděnice (Gramofonové závody Loděnice). However, the new legal environment had a fundamental influence on the emergence of new, but smaller, and essentially non-commercial music publishers, which have no real impact on the music market. That market is primarily influenced by large Czech and especially international or global companies, for example, Universal Music, EMI, Sony Music/Bonton, Warner Music, BMG Ariola, Popron Music, Supraphon, Multisonic, etc.*

In 1994, in the second wave of privatisation, the Czechoslovak art agency Pragokonzert, a governmental organisation, was privatised.

*Number of sound media issued in 2000–2004.

Year	Total number (in millions)
2000	6.59
2001	6.52
2002	4.69
2003	4.37
2004	3.98



Source: IFPI (International Federation of the Phonographic Industry) Czech Republic (the Czech national branch of this international non-governmental organisation).

The transformation of radio and television broadcasting led also to the transformation or dissolution of some music bodies that had been established by the state-run enterprises Czech Radio and Czech Television, while at the same time some new professional music ensembles emerged – the Czech Philharmonic Choir of Brno (Český filharmonický sbor Brno o. p. s.), the Prague Philharmonia (Pražská komorní filharmonie o. p. s.), and a number of ad hoc ensembles established for particular events (recordings, foreign tours, etc.), most of whose members are usually employees of other existing symphonic and theatre orchestras.

As of 1st January 1991 the Czech Philharmonic was delimited and governmental organisations were founded: the Prague Philharmonic Choir (Pražský filharmonický sbor), Prague Spring International Music Festival (Pražské jaro) and ARDO – Association of Chamber Ensembles, and then ARDO – Association of Chamber Ensembles (1994) and the Prague Spring International Music Festival (1999) were gradually “de-nationalised”.

As the new legal environment was established, activities were launched by various new civic association-type private legal entities, physical entities with the requisite trade authorisation, commercial entities, and later also benevolent corporations, and these new entities considerably expanded the selection of genres and types of musical arts. As a result new music festivals emerged, along with new showcases, performance series, artistic workshops and artistic and commercial competitions.

– Theatre and Dance

The area of theatre, over all aspects of which the MC and the regional national committees had monopolistic control over until 1989, experienced the first phase of the transformation of the theatre network after 1990 relatively successfully, a process which involved the transfer of theatres and their buildings to the competence of the towns. In the ensuing decade only nine governmentally subsidized organisations with eleven companies were dissolved or transformed. The state enterprise Theatre Technology (Divadelní technika s. p.) was privatised. On 1st April 1992 the National Theatre was delimited, and the State Opera Prague and Laterna Magika were established as independent governmental organisations of the MC. Until 1989 the dramatic arts had been regulated under Act No. 33/1978 Coll., on Theatre Activities (the Theatre Act). In 1990 the Act’s restrictive passages were cancelled in an amendment, and the Act itself was rendered void effective 1st January 1996 with the introduction of Act No. 237/1995 Coll. on the Collective Management of Copyright of Authors and Copyright Holders and on Amendments to Certain Acts.

Since 1990 various new subjects have emerged in the sphere of the dramatic arts in the form of civic associations, commercial enterprises, and groups run by physical persons, which alongside their theatrical work devote themselves to numerous other activities: reviews, festivals, publishing professional periodicals and works, drama workshops, seminars, lectures, etc. A number of important festivals have been established: the International Festival Theatre in Pilsen, the Theatre of European Regions in Hradec Králové, Tanec Praha dance festival, Four Days in Motion, etc. Interesting developments have also occurred in the field of the performing arts (that is known as “independent scene”), which encompass new theatrical forms, new music, and new dance forms. In the field of dance and dance theatre numerous new entities have been established that focus on creating original works and on international residencies, workshops and other forms of cooperation. In the 1990s especially a major role was played in the promotion and advancement of contemporary dance by the above-mentioned dance festival Tanec Praha.

– Literature

Literature was the first fully privatised sphere of culture. With the exception of a publishing house specialising in works for the blind (K. E. Macan Library and Printing House for the

Blind), this sphere experienced rapid privatisation and liquidation overall. The centralised form of distribution disintegrated, but new de-centralised links quickly formed in its place. Distribution, which today continues to be the weakest link in the commercial chain in this field, was profoundly affected by the unsuccessful privatisation of Book Wholesalers (Knižní velkoobchod s. p.) the previous, state-owned distribution enterprise.

However, the change in political climate and the introduction of freedom of expression had a revolutionary impact on the field of literature, and literary culture flourished as a result, especially in terms of book publication and distribution. After 1989 there was a sharp increase in the number of publishers, though some new entities quickly dissolved soon after. By 1995 there were just under 2900 publishing subjects, and at present there are roughly 3500. Around 70 publishers have an annual output of between 25 and 100 published titles, and around 20 publishing enterprises publish over 100 titles annually (these figures do not include university publishers).

This boom occurred as a result of the liberalisation of regulations, which made it possible to pursue a trade without stipulated qualifications and on the basis of obligatory notification, as provided for in Act No. 455/1991 Coll. on Small Business (the Small Businesses Act), as subsequently amended (on the obligatory notification of unqualified trades), and until 1995 also on the basis of compulsory registration at the MC in accordance with Act No. 106/1991 Coll. on Non-Periodical Publications. The new Act No. 37/1995 Coll. on Non-Periodical Publications, as subsequently amended, which is the basic legislation regulating this sphere, and which directly regulates publication activities, abolished mandatory registration of publishers, altered the number of recipients of obligatory copies, and defined the required information to be included on the imprint and necessary for the identification of the publishing entity and copyright ownership.

Number of Books Published in the Czech Republic

	2000	2001	2002	2003	2004
Number of titles published	11 965	14 321	14 278	16 451	15 749
– Literature	3 281	3 726	3 605	3 498	3 381
– Children’s literature	579	575	586	746	735
– Textbooks	1 400	1 750	1 578	1 884	1 732
Number of translated titles by selected languages	3 910	4 352	4 342	4 602	4 604
– from English	2 088	2 340	2 329	2 362	2 301
– from German	927	991	982	1 029	1 033
– from French	201	227	225	273	267
– from Slovak	49	32	116	137	152
– from Polish	63	71	67	76	73
– from Russian	41	36	50	53	65
Number of registered publishers	2 898	3 136	3 267	3 448	3 619

Source: The Union of Czech Booksellers and Publishers, the National Library of the Czech Republic, and the National ISBN Agency

In 1993–1994 the state took on the role of guarantor in promoting quality, non-commercial literature, and book culture was the first sphere in which the systemic provision of subsidies was set up, which reduced the financial risk to publishers and the risk of loss connected with the publication of quality titles. The MC introduced a complex subsidy system in support of cultural activities in the sphere of literature and book culture, and in particular in support of the publication of literary periodicals and non-periodical publications. The sphere of literature (book culture) was also the first in which – drawing on a tradition established in the First Republic – the practice of awarding state prizes in the fields of literature and works of translation was reinstated.

– Cinematography

The entire sphere of cinematography was privatised after 1989. To that time cinematography had been unique among artistic fields for the exclusive state monopoly it was subjected to. Cinematography was fully centralised within Czechoslovak Film, an “economic production unit”, and moreover it did not lie within the competence of the MC. Cinematography was and is also a distinct field owing to the industrial character of film production and the increasingly close connections with the electronic media, such as television and more recently also the internet. The transformation of Czech cinematography began in 1990 and was driven by the initiative of filmmakers associated in the re-established professional body of FITES, at whose instigation the Government dissolved the economic production unit Czechoslovak Film and its general headquarters on 1st January 1991, whereby, without anything to replace it, the centralised structure of the entire film industry was also dissolved. The key piece of legislation relating to film was Act No. 273/1993 Coll., on Some Terms Relating to the Production, Distribution, and Archiving of Audiovisual Works, and on Amendments to Certain Acts and Other Provisions, as subsequently amended, which only came into effect at the end of 1993. The last film enterprise to enter the privatisation process was Zlín Studios (Ateliéry Zlín s. p.), and it took five years to complete the process; while by 2004 the liquidation and bankruptcy proceedings surrounding the state enterprise Film Industry (Filmový průmysl s. p.) had still not been brought to a close. Over the course of a decade the state monopoly over cinemas and the distribution and production of films had been completely eliminated. Although the Beneš decrees were still valid (decree issued by the President of the Republic on 11th August 1945 on the nationalisation of property, with specific measures – No. 50 – referring to the film sector), the first private production and distribution companies began to emerge as early as 1991. Czech cinematography lost the income from cinema admission receipts that had previously constituted a significant source of finance for the production of Czech feature films, and this occurred without any specific legislative measures being introduced to compensate for this loss by stimulating private investment into film production. During the transition period, in 1991–1992, the state provided a one-time state subsidy of 100 million Czk, which was targeted for use to complete those projects already in progress. In 1992 Act No. 241/1992 Coll., on the State Fund for the Support and Development of Czech Cinematography, established a so-named fund to support and develop Czech cinematography. Audiovisual legislation (Act No. 241/1992 Coll., on the State Fund for the Support and Development of Czech Cinematography, and Act No. 273/1993 Coll., on Some Terms Relating to the Production, Distribution, and Archiving of Audiovisual Works, and on Amendments to Certain Acts and Other Provisions, as subsequently amended), which has been in effect for over a decade, is now viewed as inadequate, particularly owing to the fact there are no coordinative and service institutions providing centralised services, especially in the area of publicity and the exporting of Czech film production, for the sphere of cinematography, which is currently represented by dozens of individual private entities. Another influential factor that must be taken into account is the transformation of Czech Television from its former role as the main producer of primarily documentary films into its current important role as a co-producer of films.

Czech Film Distribution 2000–2004

	2000	2001	2002	2003	2004
No. of premiers overall	164	173	196	208	186
No. of premiers of Czech feature films	20	19	20	16	21
Screenings (in thousands)	197	253	306	341	327
Viewers (in thousands)	8 719	10 363	10 693	12 140	12 046
Box office receipts (in mill. of Czk)	593	818	946	1 084	1 106
Average annual theatre attendance per person	0.85	1.01	1.04	1.18	1.17
Average attendance per screening	44	41	35	35.5	36.9
Average admission price (Czk)	68	79	88.5	89.3	91.8
Total no. of permanent cinemas ¹	690*	665*	665*	623	544
Total no. of screens	700	734	765	756	674
– multiplex cinemas	5	10	14	15	15
– theatre cinemas	50	94	128	136+1 ²	136+1 ²

¹ Including coffeehouse cinemas and film club facilities; not including cinemas with irregular screenings, summer or travelling cinemas.

² Including IMAX cinemas.

* Approximation.

Source: Union of Film Distributors.

The Transformation of Funds for the Support of Culture

In 1993 and 1994 the introduction of Act No. 318/1993 Coll., governing the change in the status of cultural funds and amendments to Act No. 35/1965 Coll., on literary, scientific and artistic works (the Copyright Act), as subsequently amended in Act No. 89/1990 Coll. and Act No. 468/1991 Coll., resulted in the transformation of the country's cultural funds, which under the previous regime had been the major sources of funding for artistic activities. Owing to these legislative changes the relevant funding bodies no longer had at their disposal the legally prescribed income from the fees paid by recipients of authors' royalties and the honoraria of performing artists, and from the fees paid for use of literary, scientific and artistic works in the public domain and from the fees paid by the users of a work. In accordance with Article II of the above-cited act the income from fees for the use of such literary, scientific and artistic works was divided between the Czech Music Fund Foundation – which prior to its transformation in 1991 had founded the Leoš Janáček Foundation and the Bohuslav Martinů Foundation, into which the copyright royalties of said composers were deposited – and the Foundation Czech Art Fund (Nadace Český fond umění; or Czech Art Fund, as it was originally called, from which the Czech Architecture Foundation separated in 1997) and the Czech Literary Fund Foundation (Nadace Český literární fond).

The Czech Art Fund had by far the largest amount of property at its disposal within the framework of the three cultural funds, and it also owned a number of attractive pieces of property. Various transactions that were made (for example, unfavourable contracts) up until the year of the transformation (1994) resulted in a substantial outflow of property. In addition the Mánes building became the object of a protracted legal dispute between SVU Mánes and the Foundation Czech Art Fund that lasted through the 1990s. The subsidy programmes of this art foundation are negligible sums. Support provided by the Foundation in the form of open programmes represented in 2003 and 2004 sums in the amount of one million Czk, which included distribution of its income from the Foundation Investment Fund (Nadační investiční fond, NIF). In 2003 this was a sum of 315 000 Czk and in 2004 a sum of 264 000 Czk.

Although there are nine cultural foundations¹⁰ that received support from the **Foundation Investment Fund**, among which even the former cultural funds after their transformation, today these foundations are still not strong enough to be able to cover the needs of their artistic fields or, as is the customary practice of large foundations, to participate in identifying problem areas, introducing new methods of support, and supporting model pilot projects. This is owing to the real opportunities connected with the economic management of foundation property, which represents a basic source of income for these foundations. The administration of foundation property is laid out for foundation employees in a form of management involving the commercial lease of properties, which is the most widespread form of foundation assets, and low returns on the “low-risk” bank products, in which it is possible to invest financial resources. In addition, properties owned by foundations are often in need of further investment to cover essential repairs and reconstruction. The total sum that NIF has contributed to the foundation capital of cultural foundations is 170 437 000 Czk. Given that the NIF provided the foundations with these financial resources on the condition of increasing the foundation capital from which only the yields can be used, these resources enable a total potential annual yield of between 1.7 and 6.8 million Czk, which, thanks to the NIF, these foundations are able to distribute annually.

¹⁰ The Government earmarked 1% of the stocks from privatisation to go to the Foundation Investment Fund. In the first stage of distribution of resources a contract was signed with 38 foundations and in the second stage with 64 foundations. In 1999–2003 a total of 1 882 000 000 Czk was distributed to the foundations, 16.8% of that amount went to cultural foundations.

Cultural Foundations Supported by the NIF (in Czk)

	Stage I	Stage II	Total	Total foundation assets as of April 2005
Czech Music Fund	24 158 000	18 871 000	43 029 000	224 452 800
Foundation Czech Art Fund		17 235 000	17 235 000	151 748 663
Czech Literature Fund	23 720 000	18 108 000	41 828 000	98 687 511
Czech Architecture Foundation		15 599 000	15 599 000	62 245 390
Artist's Life Foundation		17 017 000	17 017 000	46 691 640
Baroque Theatre of Český Krumlov Castle Foundation	5 565 000	12 326 000	17 891 000	32 904 000
Foundation for Contemporary Arts Prague		15 272 000	15 272 000	20 861 000
Prague Philharmonia Foundation	1 543 000		1 543 000	3 006 950
Association of Libraries CR Foundation	1 023 000		1 023 000	1 523 000
TOTAL			170 437 000	642 120 954

Source: MÜLLER, Jiří. *Kapitalizace českých nadací* [The Capitalisation of Czech Foundations]. Praha: Fórum dárců, 2002.

Forms of State Support

A pronounced change in the approach to state support for professional artistic life since 1992 occurred with the initiation of grant proceedings to subsidise professional arts, initially intended only for civic associations. After experience with running grant proceedings for civic associations, in 1996 the Ministry of Culture opened the grant proceedings to other legal and physical persons. The introduction of Act No. 479/2003 Coll., amending Act No. 218/2000 Coll., on Budgetary Rules and on Amendments to Certain Related Acts (Budgetary Rules), as subsequently amended, Act No. 337/1992 Coll., on the Administration of Taxes and Fees, as subsequently amended, and Act No. 353/2003 Coll., on Excise Duties, the range of potential grant recipients was expanded to include also foundations and endowment funds. Owing to the large number of applications the grant proceedings were limited from the outset by pre-specified eligibility terms.

After the founding responsibilities for the basic network of theatres and symphony orchestras was transferred from state administration to the regional authorities, and after the new tax system was adopted in 1993, the state lost its influence on funding the regional activity of these organisations. This generated a need for the renewal of direct state support of regional theatres and symphony orchestras. For this reason in 1996 the Programme for the Support of Czech Theatres (Program podpory českých divadel) was launched, and in 1997 the Programme for the Support of Symphony Orchestras and Choirs (Program stálých symfonických orchestrů a pěveckých sborů). For financial reasons the Programme of State Support for the Exhibition of Contemporary Art in Galleries, Museums and Exhibition Halls has not yet been launched.

The State Fund of Culture of the Czech Republic

The State Fund of Culture of the Czech Republic was founded in 1992 (Act No. 239/1992 Coll., on the State Fund of Culture of the Czech Republic, as subsequently amended) as another extra-budgetary source of funding in support of the arts. Although the act stipulates that the Fund is able to obtain support from the state budget, its goal is to obtain funding primarily from sources other than at the expense of taxpayers. The basic problem of the Fund's existence from the start has been the fact that the sources of funding directly stipulated in the act have proved either inadequate or unrealistic for the Fund's needs. The State Fund of Culture distributed funding for the first time in 2002, that is, ten years after it had been founded, when 5 475 000 Czk was distributed in support for cultural projects. The Fund obtained this funding out of the proceeds from the EuroLotto number lottery and the "Meloun" scratch-card lottery run by the EuroLotto company. This lottery was unfortunately terminated, however, owing to its commercial failure. In 2004 the Fund received a special donation of 20 000 000 Czk, with which it was able in 2005 to provide a total of 10 000 000 in support for 111 projects selected in a second application procedure; it will distribute the second half of the donation in a third application procedure in 2006. In 2004 the Fund acquired administrative competence over the National House in Vinohrady, on the condition that income from rent would be used to support cultural projects in subsequent years. At present the Fund continues to manage two properties owned by the state – U Hybernů House and the House of the Black Madonna. U Hybernů House has been leased for a fifty-year term to Hybernia a. s., which is currently reconstructing the building into a music theatre, which it will then also operate. Since December 2003 the House of the Black Madonna has been home to the National Gallery in Prague's permanent exhibition of Czech Cubism. The ground and underground floors have been leased at market price to tenants, and on the first floor the original Cubist cafe has been reopened.

Another source of income, pursuant to § 26 par. 2 of the Copyright Act, Act No. 121/2000 Coll. on Copyright, on Rights Related to Copyright and on Amendments to Certain Acts (the Copyright Act), as amended in Act No. 81/2005 Coll., whereby Act No. 121/2000 Coll. is amended, is the income from the exercise of the ownership rights of authors and performing artists that have passed by escheat to the state.

Funding Distributed by the State Fund of Culture of the Czech Republic in 2000–2004
(in thous. of Czk)

Area of support	2000	2001	2002	2003	2004
Support for the emergence and creation of works of artistic value	0	0	790	0	0
Editorial initiatives in the sphere of non-periodical and periodical publications	0	0	1 145	0	0
Acquisition, restoration and maintenance of cultural monuments and items destined for collections	0	0	570	0	0
Exhibition and lecture activities	0	0	485	0	0
Promotion of Czech culture abroad	0	0	450	0	0
Organisation of cultural festivals, and similar cultural events	0	0	1 140	0	0
Support for cultural projects aimed at preserving and cultivating the culture of ethnic minorities in the Czech Republic	0	0	280	0	0
Support for high-quality amateur artistic activities	0	0	300	0	0
Protection, maintenance and development of library collections	0	0	75	0	0
TOTAL	0	0	5 475	0	0

State Fund of the Czech Republic for the Support and Development of Czech Cinematography

The State Fund of the Czech Republic for the Support and Development of Czech Cinematography, the second extra-budgetary source of funding, was established in 1992 (Act No. 241/1992 Coll.) and eventually became the only tool of public financial support for cinematographic work in the Czech Republic. At present the Fund has two main income sources. The first source is the commercial use of the films over which the Fund exercises its right as producer, i. e. films produced in the Barrandov Film Studio and the Gottwaldov/Zlín Film Studio between 1965 and 1990; it is expected however that this source will gradually decline along with the waning interest on the part of the main buyers, i. e. domestic television stations. Copyright royalties constitute approximately 80% of the Fund's total income. Bonton Zlín Studios (Ateliéry Bonton Zlín a. s.), represents the Fund on a contractual basis in the sale and marketing of films. The second important source of incomes is the surcharge of 1 Czk on the admission tickets sold at cinema box offices. The amount of this surcharge has not been valorised since 1992, despite the fact that the price of admission tickets has increased several times during this period, which is an issue that should be addressed in an amendment to the relevant act. Other very minor sources of income are the proceeds generated by projects supported by the Fund, property rent, interest, received penalty payments and application fees. In 2001 the Fund received a subsidy from the state budget in the amount of 10 million Czk, and that was the only state budget subsidy it has received. The Fund announces its application deadlines twice a year.

Like the State Fund of Culture of the Czech Republic, other sources of income for the State Fund for the Support and Development of Czech Cinematography are, pursuant to § 26 par. 2 of the Copyright Act No. 121/2000 Coll., on Copyright, on Rights Related to Copyright and on Amendments to Certain Acts (the Copyright Act), as amended in Act No. 81/2005 Coll., whereby Act No. 121/2000 Coll. is amended, income from the exercise of copyright over audiovisual works that have passed to the state in escheat.

Support Distributed by the State Fund of the Czech Republic for the Support and Development of Czech Cinematography in 2000–2004 (in thous. of Czk)

Support from the Fund for Cinematography	2000	2001	2002	2003	2004	Total	Annual average
Support for the creation (screenplays) and production of Czech films	57 138	64 414	62 024	40 568	54 956	279 100	55 820
Support for the distribution of valuable cinematic works	3 920	4 430	11 450	6 190	5 334	31 324	6 265
Support for the promotion of Czech film (film festivals, etc.)	3 245	3 300	5 130	4 390	5 692	21 757	4 351
Support for the technical development and modernisation of Czech cinematography	0	2 700	2 400	2 900	2 231	10 231	2 046
TOTAL	64 303	74 844	81 004	54 048	68 213	342 412	68 482

Copyright Law

Copyright is an important mechanism of support for the arts at the national and international level. As part of a system of rights applied to intellectual property copyright serves as a stimulus to artists and ensures the protection of cultural diversity, while at the same time it is designed to achieve an adequate balance between protecting the rights of authors and the interests of the users of intellectual property.¹¹

Important changes occurred in the sphere of copyright in 2000, when the new Copyright Act was adopted [Act no. 121/2000 Coll., on Copyright, on Rights Related to Copyright and on Amendments to Certain Acts, (hereinafter "CA")]. The new act re-codified copyright and did so taking into account the current state of technological development connected with new methods and possibilities in the area of the production and use of works and other items protected under the CA, and also taking into account the need to harmonise Czech legislation with that of the EU and abide by international agreements that apply to this branch of law.

¹¹ See the "World Intellectual Property Declaration" from the World Intellectual Property Organisation, available, for example, at www.mkcr.cz.

Particularly important changes introduced in the new Act are the extension of the copyright term so that it applies to the life of the author plus seventy years after the author's death and the resumption of copyright protection for works that had entered the public domain before the Act's introduction so that copyright applies for the remainder of the copyright term, a broadening of the definition of those to whom copyright protection may apply (to include producers of audiovisual recordings and the right of the maker of a database to that database), recognition of the right of publishers to compensation for the reproduction of published works for personal use, the extension of protection to computer games, photography, and databases, the creation of a list of common provisions relating to ownership rights, and explicit recognition of the right to communicate items protected under copyright to the public via the internet.

The collective (formerly group) administration of rights was modified. In connection with this the relevant section of Act No. 237/1995 Coll., on the Group Management of the Copyright of Authors and Copyright Holders and on Amendments to Certain Acts was cancelled. The Act on the Group Administration of Copyright also superseded an earlier Regulation of the MC, No. 241/1991 Coll., on the Exclusive Rights of Certain Organisations Representing Authors or Performing Artists.

By virtue of the authorisation accorded to them by the MC, there are civic associations of authors and other copyright holders (performing artists and the producers of audio and audiovisual recordings) that perform the collective administration of copyright: OSA – the Performing and Mechanical Rights Society of Composers, Authors and Publishers, Dilia, the Theatre and Literary Agency, OOA-S, the Copyright Protection Organisation – Association of Authors in the Visual Arts and Architecture, Gestor – the Union for the Protection of Authorship, and Intergram – the Independent Society of Performing Artists and Producers of Audio and Audiovisual Recordings.

Also cancelled were Regulation No. 196/1954 Coll., on the tariffs for performance royalties for public non-theatrical performance of musical works, Regulation No. 115/1991 Coll., on the remuneration and compensation liable to entitled legal subjects for the use of items protected under copyright in connection with the creation of an audio or audiovisual recording and in connection with the public lending of photographs for personal use, Regulation No. 116/1991 Coll., amending the remuneration tariffs for performing artists and compensation for producers of audio and audiovisual recordings in connection with the use of recorded performances and sounds and audio and audiovisual recordings in public productions with the aid of technical devices, Regulation No. 117/1991 Coll., on organising public productions, Regulation No. 520/1992 Coll., amending Regulation No. 115/1991 Coll. of the Ministry of Culture of the Czech Republic on the remuneration and compensation liable to entitled legal subjects for the use of items protected under copyright in connection with the creation of an audio or audiovisual recording and in connection with the public lending of photographs for personal use, and Regulation No. 261/1996 Coll., on the remuneration of authors of works that can by their nature be reproduced for individual personal use on a paper base or their reproduction by means of a transfer to another material base with the aid of technical devices.

With the exception of the remuneration tariffs amended in the Annex to the Copyright Act (remuneration for the re-sale of an original of an artistic work, remuneration liable to copyright holders in connection with reproduction for personal use from producers/importers of empty recording media, remuneration from producers/importers of technical devices for making reproductions and for the provision of reproduction services for a fee) the Copyright Act leaves it to the contracting parties (holders of individual or collective administration copyright and users) to agree on the amount of remuneration to which copyright holders are entitled under the Copyright Act. In view of the legal monopoly of collective administrators the Act explicitly stipulates their obligation to enter into contracts with users on fair and equal terms.

The distribution of remuneration and of income from unjust enrichment on the part of the collective administrators is determined by the distribution transaction rules of individual collective administrators approved by the bodies of the civic associations. The collective administrators can use a portion of collected remuneration to cover effective functional incurred in connection with the performance of collective administration. By law, a collective administrator is required to prepare and make public without undue delay its annual financial statements (including the auditor's report) in the Commercial Bulletin and to prepare an annual report on activities and economic management, which need not be made public, and may be made available just to members.

The Copyright Act has thus far only been amended by Act No. 81/2005 Coll. In September 2005 a government bill to amend the Copyright Act was submitted to Parliament, which renders the Czech national copyright legislation fully in compliance with the legislation of the European Community.

The Non-Governmental Non-for-Profit Sector

The substantially fragmented character of the artistic and professional organisations and institutions that exist has meant that the cultural sphere has as yet not succeeded in becoming a more prominent part of the non-governmental non-for-profit sector as a whole. In comparison with other spheres (primarily social, health and environmental) the non-governmental, not-for-profit domain of culture is considerably under-developed and inadequately represented. The most recent report on the not-for-profit sector¹² indicates that in the Czech Republic only 11% of the subsidies provided from public funds go to the promotion of culture, including the protection of cultural heritage, whereas the largest amount of support goes into social services (36%) and sports (34%). The report also draws attention to the current trend of establishing governmental organisations at the level of state administration, the regions, and the municipalities, and asks whether this is a desirable phenomenon and whether it is the direction in which Czech society and the Czech state really want to continue in.

The non-governmental not-for-profit sector in the sphere of the arts garners substantial support from national branches of international non-governmental organisations under which individual artistic fields are associated. These include, for example, the national centre of the **International Theatre Institute** (ITI), the national branch of the international non-governmental organisation the Czech Music Council (ČHR), and so on, which associate the key organisations in the fields of theatre and music. ITI and ČHR function as informal associations of legal subjects (they have no legal personality of their own) and their secretariats are based at the Theatre Institute. The Theatre Institute also provides these secretariats with organisational and technical infrastructures and its budget includes support for the activities of and participation of individual members in international meetings.

Another organisation in the sphere of the arts is the **Artists' Council (Rada uměleckých obcí, RUO)**, which was founded in 1992 as a volunteer association of professional artistic organisations (legal subjects) and which in the early 1990s functioned as an advisory body to the Minister of Culture. Members of the RUO include the Society of Czech Writers (Obec spisovatelů), the Society of Translators (Obec překladatelů), the Society of Architects (Obec architektů), the

¹² From the Report on the Non-for-Profit Sector in the Czech Republic, which was drawn up according to Government Resolution No. 807 dated 6th August 2003; the report was initiated by the Government Council for Non-Governmental Non-Profit Organisations, which prepared the preliminary structure and some materials, and the report was put together by Mgr. Tereza Vajdová, PhD.

Union of Authors and Interpreters (SAI), the Association of Musicians and Musicologists, the Association for Broadcasting (Sdružení pro rozhlasovou tvorbu), the Union of Visual Artists of the Czech Republic, the Syndicate of Visual Artists, the Association of Actors, the Czech Film and Television Association (FITES) and the Association of Photographers. RUO is a founding member of the European Council of Artists (ECA).

Mention must also be made of the work of individual professional organisations, such as the Audiovisual Producers' Association (APA), the Association of Museums and Galleries of the Czech Republic (AMG), the Czech Chamber of Architects (ČKA), the Czech Film Chamber (ČFK), the Association of Professional Theatres, the Association of Symphony Orchestras of the Czech Republic, the Association of Czech Booksellers and Publishers (SČKN), the Czech Association of Music Festivals, the International Federation of the Phonographic Industry (IFPI), Association of Art Critics and Theoreticians (AICA), the Council of Galleries of the Czech Republic, and others.

Unions

Alongside professional organisations in the Czech Republic there are also professional unions, which operate under the Czech-Moravian Confederation of Trade Unions (Českomoravská konfederace odborových svazů, ČMKOS) and under the Confederation of Art and Culture (KUK) with the mission of defending and promoting the professional rights of those employed in the sphere of culture and the arts and in other creative work. Members of the Czech-Moravian Confederation of Trade Unions include the Union of Employees in the Field of Culture and Environmental Protection, the Union of Cultural Institutions, the Association of Actors and the Union of Professional Singers. Members of the Confederation of Art and Culture are the Association of Czech Cameramen, the Association of Film and TV Editors (FITES), the Association of Commercial Musicians, the Association of Hair and Make-up Professionals, the Association of Soundmen of the Czech Republic, the Union of Interpreters and Translators, KINOS – Cinematography Workers International, Independent Club of Lawyers, Union Association of Theatre Workers, the Syndicate of Translators and Interpreters, the Syndicate of Visual Artists, ARTES Artists' Association, and the Slovak Union of Professional Orchestra Musicians of the Slovak Republic. Unions are involved in the Council of Economic and Social Agreement of the Czech Republic (the national tripartite), which is a forum for social dialogue between the government, unions, and employers.

Non-Professional Arts

It is possible to chronologically divide the developments in the sphere of the non-professional arts into three stages. The first stage, between 1989 and 1992, saw the spontaneous dissolution of the systemic network of cultural facilities (the district and regional cultural centres that had mediated a system of showcases and which operated as a form of extracurricular education) and the incorporated foundations that had existed to that time (union and youth institutions were transformed, and companies, groups, ensembles or individuals often had to discontinue their activities, as they were deprived of the space, funds, costumes or instruments required for their artistic work). Another contributing factor was the departure of some prominent artistic figures, who in the post-1989 period turned their attention to politics or business or entered the professional sphere; the result was a sharp decline in the quantity and quality of amateur arts. The chaos of the situation was compounded by the initially liberal outlook adopted by the state administration towards the arts, based on the premise that all that is required for the advancement of culture is a free society in which to create. The only remaining instrument of support was the national showcases announced and financially supported by the MC.

The next stage was marked by a clear turnaround in events. Various civic associations began to emerge and pursue activities at the national, regional and local levels (civic associations became a common legal form adopted by individual companies or ensembles), which for some artistic fields sufficed. A newly founded institution – Information and Consulting Centre for Local Culture (Informační a poradenské středisko pro místní kulturu, IPOS) – began offering an information and advisory service. In the area of folklore and traditional folk culture a governmental organisation of the MC – the Institute of Folk Culture (Ústav lidové kultury, ÚLK) in Strážnice – continued to function. At the start of the 1990s the MC opened up grant programmes in support of non-professional artistic activities organised by civic associations. The unique system of showcases – the history of which stretches back, for example, in the area of amateur theatre, to the period of the First Republic – remained intact; it was sustained through the devoted activities of amateurs and thus supported by a voluntary decision on their part. At that time the system focused on fourteen artistic fields: filmmaking, stage dance for children and for adults, folk dancing for children, dance for children, country music, artistic recitals and poetry theatre, puppet theatre, theatrical and musical productions, adult theatre for children, alternative theatre, rural theatre, children's theatre and performance, and children's school choirs. This complexly structured system encompasses shows from the regional to the national level. Even the once problematic viewpoint of the municipal authorities towards these activities has changed gradually, and the municipal and district authorities have gradually begun to support local amateur artistic activities. One motivating factor was that areas of artistic performance previously not permitted have opened up (e. g. choirs singing spiritual music).

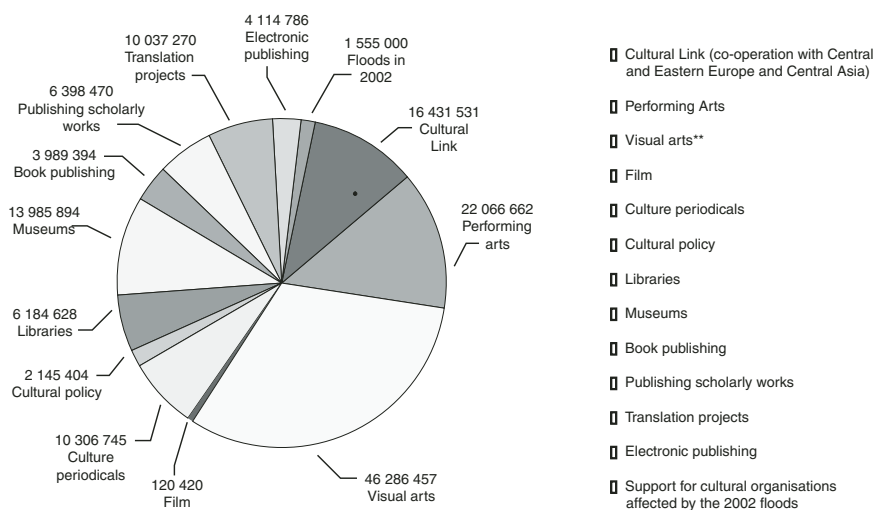
A characteristic feature of the post-1995 development was the increase in the number of non-professional artistic activities, especially among children and young people, and including the establishment of new fields (e. g. children's filmmaking, new types of dance, children's folk singing, etc.). In technological fields these changes were ushered in with the emergence of new forms of technology. The expansion of professional training opportunities also had a positive impact (e. g. the introduction of choirmaster studies as a new university-level discipline, new departments of educational drama at post-secondary institutions specialising in the arts and pedagogical education). Some important civic associations flourished – for example, the Folklore Association of the Czech Republic is exceptionally active as an umbrella organisation, within which 412 member groups and 17 autonomous regional associations are associated, and it organises its own events, shows and seminars, and it publishes guides and repertory and promotional publications, and the role of the Czech Sokol Organization (Česká obec sokolská) and other organisations has also grown considerably. The impact of these developments on the arts has been the diversification of creative work, accompanied by the retreat of some more traditional artistic fields (for example, traditional puppetry, men's choirs). The system of showcases has also been extended to include several other fields, such as folk singing and student theatre.

There are a number of objective and subjective factors affecting the current territorial distribution of activities, key among which are demographic indicators, cultural traditions, and public support through the bodies of regional self-government. Funding is based on a multi-source principle. Individual funding resources are combined with public funding (in the form of non-investment grants from the municipalities, regions and state administration, primarily from the MC and from the Ministry of Education, Youth and Sport). It is also important to note that there is virtually no interest in supporting this sphere among sponsors.

Support from Abroad

After 1989 various foreign entities became active in providing targeted assistance in the Czech Republic during the transformation of the arts. Primary among them were the British Council, Goethe Institut, Institut français, the Swiss foundation ProHelvetia, and the MATRA programme, an initiative of the Ministry of Foreign Affairs of the Netherlands, which provided long-term support to various Czech artistic and cultural entities. Substantial financial support from abroad was provided by the Open Society Fund Prague, a private foundation, and the Foundation and Centre for Contemporary Arts Prague. Their mission was to support the arts and culture as integral parts of an open civil society, and they went about achieving this by funding innovative and experimental artistic projects and by providing support for the establishment of non-governmental not-for-profit infrastructure in the arts. In 1993–2002 these foundations spent 130 million Czk in the areas of international artistic cooperation, the visual arts, the performing arts, artistic and culture periodicals, and support for the publication of books and translations of works into Czech and for electronic publishing. As EU accession approached such support from private and public foreign sources was gradually withdrawn.

A Summary of Expenditures under the Arts and Culture Programme of the Open Society Fund Prague in 1993–2002*



* The Open Society Fund Prague ran its Arts and Culture Programme from the time of its founding in 1993 up until 2002. It also supported numerous other cultural projects within the framework of its civil society programmes and supported individuals through its stipend programmes.

** The visual arts received support from the Soros Centre for Contemporary Art Prague, later the Centre for Contemporary Art Prague, for activities such as exhibitions and the documentation of contemporary art, a library, an information centre, and the implementation of a foundation grant programme.

Source: Open Society Fund Prague.

The Czech Republic's Participation in EU Programmes

The Culture 2000 Programme

The Culture 2000 programme is one of the European Union's community programmes. It is a framework programme designed to support cultural projects and it is a follow up to three specific cultural programmes that were running in the EU in 1996–1999.

The Culture 2000 programme provides partial funding for projects. The funding for maximum one-year projects is a minimum of 50 000 Euro and a maximum of 150 000 Euro and this funding is intended to cover at most 50% of the total project budget. Financial support for projects 2–3 years in length must not exceed 60% of the total project costs and the maximum sum granted is 300 000 Euro. Since 2002 the Foreign Department of the MC has organised grant proceedings in order to help Czech participants obtain the necessary remaining funding for projects supported under the Culture 2000 programme.

The Czech Republic has had access to this programme since 2001. In this connection the MC established the Czech Cultural Contact Point on 1st January 2001. Its mission is to provide information and consultation on the EU Culture 2000 programme to Czech, primarily cultural, organisations, and thus to stimulate their interest in international cooperation and the implementation of valuable international cultural projects.

Each year the programme calls for the submission of applications for project support. In 2000 and 2001 it established thematic areas in which applications for support could be submitted. In 2002, 2003 and 2004 the project selection procedure focused on one priority area for each given year: in 2002 it was the visual arts, in 2003 the performing arts, and in 2004 the programme focused on cultural heritage as a priority. However, in 2002–2004 a small number of projects were also supported in areas that were not named a priority for that year. No priority areas were defined for 2005 and 2006.

The programme only supports international projects with a minimum number of participants from various countries, to which the programme is open. Two types of projects are defined within the programme: maximum one-year projects involving the participation of a minimum of three organisers from three countries; and multi-year projects between 24 and 36 months in duration and involving the participation of a minimum of five organisers from five different countries. Czech organisations can participate in these projects as the main organiser (applicant and head of the project) or as co-organisers (a minimum of 5% co-participation in the project).

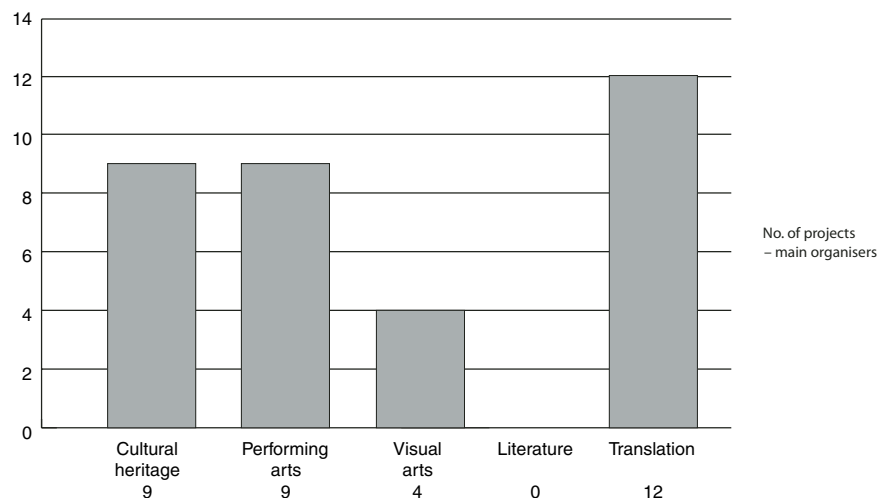
Number of main organisers and co-organisers from the Czech Republic involved in projects under the Culture 2000 programme in 2001–2005

Year	Main organiser	Co-organiser	Number of projects	Total amount of support for the CR in Euro
2001	2	8	10	168 344
2002	6	11	17	614 687
2003	5	9	13	520 867
2004	10	13	23	839 423
2005	11	19	30	989 261
Total	34	60	93	3 132 582

Source: Czech Cultural Contact Point (CCP) Culture 2000.

The sum indicated as the total amount of support from the EU includes: the 1.9% of the total funding contributed by main organisers and the 2.5% contributed by co-organisers. This method was employed owing to the terms of the programme, which stipulate that the co-organisers must financially contribute a minimum of 5% of the overall budget.

Projects of Czech Organisations in the role of Main Organiser in the Culture 2000 Programme in 2001 – 2005



Source: Czech Cultural Contact Point (CCP) Culture 2000.

Between 2001 and 2004 the Czech Republic paid an annual fee of 651 060 Euro for participation in the Culture 2000 programme. Part of this fee, in the amount of 290 215 Euro annually, is covered by the PHARE programme.

The MEDIA Programme

The MEDIA Programme is one of the European Union's support programmes, the aim of which is to provide support for the production, distribution and promotion of European audiovisual work. The Czech Republic became a part of the EU MEDIA Programme on 30th July 2002. MEDIA Desk Czech Republic, the programme's national office, opened in Prague on 2nd January 2003. The mission of MEDIA Desk CR is to provide information about the MEDIA Programme and consultation services to applicants seeking support from the programme. The office is run under the Czech Film Chamber o. p. s., with the financial backing of the MC and the European Commission.

In 2002 and 2003 a total of 872 948 Euro was granted by the EU MEDIA Programme in support for Czech projects. The country thus managed to exceed the 555 000 Euro membership fee that it paid into the MEDIA Programme at that time. The largest sum, a total of 412 950 Euro, was received by film distributors to support the distribution of European films. Film producers were also successful and were granted 190 000 Euro in support for the development of new films.

In 2004 Czech projects received a total of 1 352 173 Euro (40 565 000 Czk) from the MEDIA Programme. The largest amount of support – 519 673 Euro (15 590 000 Czk) – went to film distributors, and a considerable amount of support also went to film producers – the MEDIA Programme contributed 480 000 Euro (14 400 000 Czk) to the development of new Czech films.

In 2005 Czech projects received over 1 million Euro. Again the largest sum went to film distributors for the distribution of foreign European films. The first Czech project this year received support from the MEDIA programme intended for producers for the production of television projects

Summary of Support Granted under the MEDIA Programme to Czech Projects in 2003

Support Programme	Amount in Euros	Percentage of total support	Number of projects/groups
MEDIA Development	190 000	19	6
MEDIA Distribution – Automatic	298 348	32	12
MEDIA Distribution – Selective	127 000	13	5
MEDIA Promotion	85 000	9	2
MEDIA Promotion – Festival Support	110 000	12	7
MEDIA Training	144 000	15	2
Total	954 348	100	44

Source: MEDIA Desk Czech Republic.

Summary of Support Granted under the MEDIA Programme to Czech Projects in 2004

Support Programme	Amount in Euros	Percentage of total support	Number of projects/groups
MEDIA Development	480 000	36	10
MEDIA Distribution – Automatic	421 673	31	6
MEDIA Distribution – Selective	98 000	7	9
MEDIA Promotion	52 000	4	1
MEDIA Promotion – Festival Support	161 500	12	6
MEDIA Training	139 000	10	2
Total	1 352 173	100	34

Source: MEDIA Desk Czech Republic.

The Establishment of the Administrative Regions in the Czech Republic

The transformation process that began and progressed in the early 1990s substantially eased up in pace in later years. Conditions ensuring the involvement of private and public non-governmental initiatives in funding artistic work and the preservation of cultural heritage¹³ and conditions effectively enabling the flow of a plurality of sources into this sphere however were not ultimately established during this time.¹⁴

The de-nationalisation process that was launched at the start of the 1990s and was intended to culminate in the establishment of higher territorial self-governing units – the regional authorities – was only completed in 2002, when the regions began to effectively function as administrative units. The outcome of the overall reform of public administration, wherein the remaining elements of finance and responsibility were transferred to the newly established regions (Act No. 157/2000 Coll., on the Transfer of Certain Matters, Rights and Obligations from the Czech Republic to the Regions), and this concluded the process of de-nationalising the sphere of culture. This final stage in the transformation primarily affected the visual arts, as out of the forty governmental organisations of the MC two-thirds were art galleries (19) and museums (10). The process also involved the transfer of two theatres, one orchestra, and one cultural institution.

Governmental Organisations in the Arts that were transferred to the regions under Act No. 157/2000 Coll. on the Transfer of Certain Matters, Rights and Obligations from the Czech Republic to the Regions

Region	Organisation	Location
Central Bohemia	Central Bohemian Museum in Roztoky u Prahy	Roztoky u Prahy
	Czech Museum of Fine Arts in Prague	Prague
Budějovice*	Southern Bohemia Chamber Philharmonic	České Budějovice
	Museum of Southern Bohemia in České Budějovice	České Budějovice
	Aleš Southern Bohemian Gallery – Hluboká nad Vltavou	Hluboká nad Vltavou
Pilsen	The Permanent Stage in Klatovy	Klatovy
	Museum of West Bohemia in Pilsen	Pilsen
	Gallery of West Bohemia in Pilsen	Pilsen
	Klatovy-Klenová Gallery	Chateau Klenová
Karlovy Vary	Gallery of Fine Arts in Cheb	Cheb
	Art Gallery in Karlovy Vary	Karlovy Vary
Ústí nad Labem	Regional Museum in Teplice	Teplice
	Gallery of Fine Arts in Litoměřice	Litoměřice
	Gallery of Modern Art in Roudnice nad Labem	Roudnice nad Labem
	Benedikt Rejt Gallery in Louny	Louny
	State Gallery of Fine Arts in Most	Most
Liberec	Museum of North Bohemia in Liberec	Liberec
	Regional Gallery in Liberec	Liberec
Hradec Králové	Museum of East Bohemia in Hradec Králové	Hradec Králové
	Gallery of Modern Art in Hradec Králové	Hradec Králové
	State Gallery of Fine Arts in Náchod	Náchod
Pardubice	Museum of East Bohemia in Pardubice	Pardubice
	Gallery of East Bohemia in Pardubice	Pardubice
Jihlava *	Vysočiny Regional Gallery in Jihlava	Jihlava
	Gallery of Fine Arts in Havlíčkův Brod	Havlíčkův Brod
	Horácká Gallery in Nové Město na Moravě	Nové Město na Moravě
	Horácké Theatre	Jihlava
Brno *	Gallery of Fine Arts in Hodonín	Hodonín
Olomouc	Museum of Natural History and Geography in Olomouc	Olomouc
	Olomouc Museum of Art	Olomouc
Ostrava *	Český Těšín Theatre	Český Těšín
	Gallery of Fine Art in Ostrava	Ostrava
Zlín	State Gallery in Zlín	Zlín

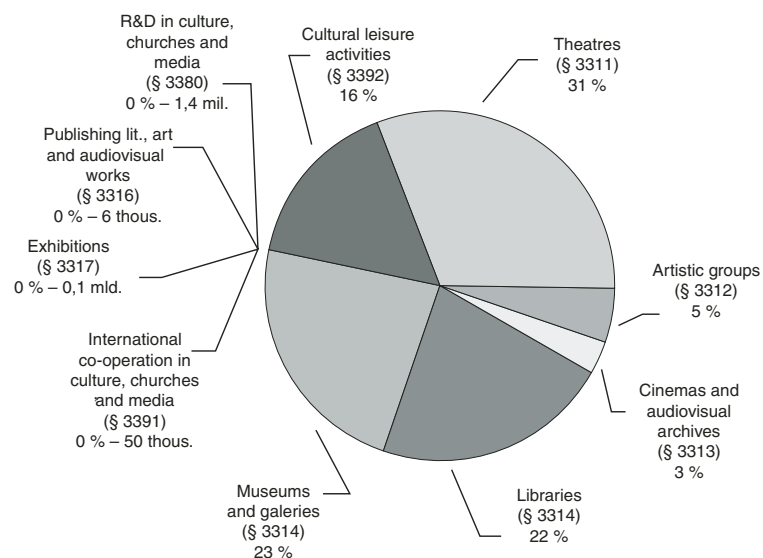
¹³ From a Government declaration issued by Prime Minister Václav Klaus on 13th July 1992.

¹⁴ From a Government declaration issued by Prime Minister Václav Klaus in 1996.

* The names of the regions and transferred organisations correspond to the names at the time of the transfer of governmental organisations.

The following graph and table illustrate how funding for the individual artistic fields out of the regional budgets evolved and how it was distributed in the sphere of culture during the period between 2000 and 2004. Neither the graph nor the table encompass all items in the sphere of culture that received support from the regional budgets but focus more on items that are connected primarily with the arts (it does not include: cultural affairs § 3319, the work of the heritage institutes § 3321, conservation and restoration of cultural monuments § 3322, the purchase of items of cultural value § 3324, acquisition and restoration of local cultural valuables § 3326, affairs connected with the protection of cultural monuments § 3329, the work of churches and religious associations § 3330, radio and television § 3341, media affairs § 3349, affairs of the culture of churches § 3399 and unnamed paragraphs § 33xx). The data show that more than one-third of the funds from the public regional budgets provided within the individual artistic categories indicated here go to activities related to theatre (34%), while library activities, which impact the sphere of culture, and especially literature, only partially, receive under one-quarter of the funds distributed (22%), and just under one-fifth goes to museum and gallery activities (19%), 16% to leisure activities in the sphere of culture, 5% to activities of artistic ensembles, and 4% to cinemas and audiovisual archives.

Public Budgets of the Regional Authorities – Distribution of Support for the Arts in 2000 – 2004
(in Czk)



Source: *Financování kultury z veřejných rozpočtů 2004* [The Financing of Culture from the Public Budgets 2004]. Praha: NIPOS, 2005.

Conversely, support for activities in the sphere of publishing literary, artistic, and audiovisual works, and for research and development in the sphere of culture, etc., receive virtually no support from the regional public budgets. This practice clearly reveals the direction in which

state-budget support for the arts is moving and the areas where it is not expected that the regional authorities will assume any significant role in support for artistic fields. In other words, it is expected that the MC will continue into the future to bear the major portion of responsibility for supporting activities in the areas of printing and publishing, research and development (thus in the area of experimentation and innovation), and international cooperation in the arts.

Governmental Organisations of the MC

The MC retained only key organisations that are national in scope. Out of the 31 governmental organisations for which the MC is currently still the founder, 13 are museums (of various types), 2 galleries, 3 monuments, 3 libraries, 4 theatrical and 2 musical organisations, 1 film archive, 1 information and advisory centre, 1 institute of folk culture, and 1 heritage institute. In 2002 the statutes and deeds founding the MC's governmental organisations were updated, and the governmental organisations are now able to finance themselves from income obtained from parallel, supplementary activities and from the productive use of the property they are entrusted with, and they are able to do so thanks to the fact that the budgetary determination of income from rent of real estate property was changed (Act No. 187/2001 Coll., amending Act No. 218/2000 Coll., on Budgetary Rules and on Amendments to Certain Related Acts [Budgetary Rules], as subsequently amended in Act No. 493/2000 Coll. and Act No. 141/2001 Coll.). The MC thus retained those governmental organisations that fulfil a unique and crucial role in individual areas of the arts, particularly with a view to the preservation of cultural heritage: the Czech Philharmonic Orchestra, the Theatre Institute, K. E. Macan Library and Printing House for the Blind, the Moravian Gallery in Brno, the Moravian Library in Brno, the National Theatre, the National Film Archives, the National Gallery in Prague, the National Information and Consulting Centre for Culture, the National Library of the Czech Republic, the National Institute of Folk Culture, the Prague Philharmonic Choir, the Museum of Czech Literature, the Museum of Applied Arts in Prague, the Museum of Puppets in Chrudim, and the Museum of Romani Culture. The exceptions in this scheme are the State Opera Prague, as the opera company is part of the National Theatre (making the MC the responsible body for two opera companies in one city), and also Laterna Magika, which was not transformed and has remained a governmental organisation of the MC, though in comparison with the other governmental organisations it receives substantially less financial support.

Governmental organisations continue to be a key mechanism of state cultural policy funded from a specific budgetary item for such organisations. The MC commits approximately one-quarter of its budget to the activities of the founded governmental organisations operating in the sphere of the arts. Their exclusive position derives not only from the unique or special nature of the property they manage, in the form of various kinds of collections, archives, and representative buildings, but is also owing to the method in which the organisations are themselves managed and financed.

A statutory position in all governmental organisations is the director, who is appointed by the minister on the recommendation of a selection committee, whose decision is based primarily on the concept submitted by that person for fulfilling the mission of the given organisation as defined in its statute. The founder sets the amount of the annual contribution to the activities of every governmental organisation. It almost never interferes in their operations, and only a small portion of the funding is tied to concrete activities (especially in connection with cultural-historical anniversaries or events) in which the state has a priority interest. Each year the governmental organisations publish annual reports, which they submit to the founder and also make public on their web sites. Uniform rules specified in Regulation No. 323/2005 Coll., which came into effect on 29th August 2005, govern how the annual reports are to be composed and stipulate their content.

Summary of the Support Distributed by the MC to Governmental Organisations Operating in the Sphere of the Arts in 2000–2004 for Operations and Regular Capital Expenditures (in thous. of Czk)

	2000 operations	2000 total	2001 operations	2001 total	2002 operations	2002 cap. exp.
National Theatre		320 679		271 442	350 170	2 445
State Opera		78 919		87 825	100 918	20 429
Laterna Magika		1 084		1 200	1 848	0
Theatre Institute		30 308		21 407	20 547	0
Czech Philharmonic Orchestra, including the Gallery Rudolfinum		80 973		55 078	60 524	0
Prague Philharmonic Choir		18 578		18 188	21 189	0
National Gallery in Prague		207 110		192 729	206 846	0
Museum of Applied Arts in Prague	27 575	40 070	28 490	31 241	35 012	8 878
Moravian Gallery in Brno		44 401		51 014	49 144	1 184
National Film Archives	18 834	19 609	20 351	22 269	20 708	0
Museum of Czech Literature		31 486	0	30 642		
National Library of the Czech Republic			209 639	222 113	200 987	8 866
Moravian Library in Brno		50 833	65 233	97 242	66 888	230
K. E. Macan Library and Printing House for the Blind	15 579	15 579	16 307	16 307	16 961	0
National Information and Consulting Centre for Culture (NIPOS)	23 348	23 348	22 508	22 508	24 897	0
National Institute of Folk Culture in Strážnice		17 665	15 542	20 002	16 835	4 480
TOTAL		980 642		1 161 207		

Source: Annual reports of the Museum of Czech Literature, the National Gallery, the Museum of Applied Arts, the National Information and Consulting Centre for Culture and the National Film Archives.

2002 total	2003 operations	2003 cap. exp.	2003 total	2004 operations	2004 cap. exp.	2004 total	2000 – 2004
352 615	369 952	2 316	372 268	496 925	1 600	498 525	1 815 529
121 347	113 141	10 381	123 522	121 012	500	121 512	533 125
1 848	5 539	0	5 539	5 495	0	5 495	15 166
20 547	44 263	5 045	49 308	47 561	6 600	54 161	175 731
60 524	62 559	7 180	69 739	76 766	0	76 766	343 080
21 189	21 942	0	21 942	23 709	0	23 709	103 606
206 846	240 098	0	240 098				846 783
43 890	41 358	34 343	75 701				190 902
50 328	56 261	4 396	60 657	67 816			206 400
20 708	24 521	0	24 521	25 645	0	25 645	112 752
31 524			32 064				125 716
209 853	224 477	34 338	258 815	229 129	5 290	234 419	925 200
67 118	65 347	1 613	66 960	74 383	825	75 208	357 361
16 961	17 860		17 860	18 823	2 438	21 261	87 968
24 897	26 738	0	26 738	31 017	0	31 017	128 508
21 315	17 133	4 638	21 751	27 799	1 020	28 819	112 552
1 271 507			1 470 483			1 196 537	6 080 379

Not-for-Profit Organizations Founded by the MC

The MC is also the founder of several not-for-profit organizations: the Prague Spring International Music Festival, which was established following its transformation from a governmental organisation. In accordance with Government Directive No. 991 of 11 October 2004, on the approval of the participation of the Czech Republic / the MC as co-founder of the “Prague House of Photography” (Pražský dům fotografie o. p. s.), a not-for-profit organization, the MC became the co-founder of the Prague House of Photography o. p. s. (together with the City of Prague and the civic association “PHP – Pražský dům fotografie – Prague House of Photography”), an institution focusing on the support and promotion of Czech and international photographic works and new media, and on activities aimed at building collections and on professional and educational work, etc. Support for these organisations is provided out of the Programme of Cultural Activities. In addition to these two organisations, in 1999 the MC became the founder of Corona o. p. s., a not-for-profit organization, the mission of which is to gather and disseminate information on cultural projects and opportunities for funding, organising charity gatherings, and support for individual cultural and artistic projects.

Investments of the MC

Governmental organisations also had to deal with the process of restitution, not just of individual items from collections but of entire buildings, and with the need to provide for the security of their collections and to accommodate the introduction of a new system of documenting collection items. A special programme was created for this purpose as part of the Integrated System of Protection, in which (not just governmental) organisations can apply for support from the sub-programmes “Uniform Records and Documentation of the Purchase of Cultural Monuments and Items of Exceptional Cultural Value Which Lie Outside the Framework of Grants and Subsidies for Regular Operations”.

After 1995 extensive investment activities were initiated in various governmental organisations on the basis of programme funding provided out of the state budget (ISPROFIN). There were several programmes through which the state budget provided funding for the sphere of culture, programmes that emerged gradually in accordance with the MC's requirements. The first programme, the “Acquisition and Technical Renewal of the Capital Property of Libraries, Museums, Galleries, and Theatres”, was set up in 1995 under the MC, listed under State Budget Code No. 334 010. Governmental organisations focused on the arts are currently able to apply for support from the programmes: the “Development and Renewal of the Material-Technical Infrastructure of State Cultural Institutions” (234 110), the “Reproduction of Investment Capital under the MC, Compensation for Buildings Returned in Restitution” (334 070). Alongside these there are other programmes designed to support the preservation of cultural monuments and cultural heritage.

The largest amount of state investment subsidies went into museums, galleries, and monuments in the years between 1995 and 2004 – the total sum for this period equalled 2.9 billion Czk (this sum covered even organisations with no direct focus on the arts, such as the National Museum, the National Agricultural Museum, the National Technical Museum, the Terežín Memorial, etc.). However, the biggest investment activities were directed at the National Gallery in Prague, which completed reconstruction work on the Veletržní Palace, reconstructed the Kinský Palace, commenced reconstruction of the Schwarzenberg Palace, renovated the Convent of St. Agnes of Bohemia, and restored the external facing and the canalisation of the Czechoslovak Pavilion in Venice, at a total cost of 674 007 000 Czk. The National Gallery in Prague is currently still engaged in investment activities, with the reconstruction of the Schwarzenberg Palace and Salmovský Palace. The Moravian Gallery in Brno also undertook reconstruction of the Governor's

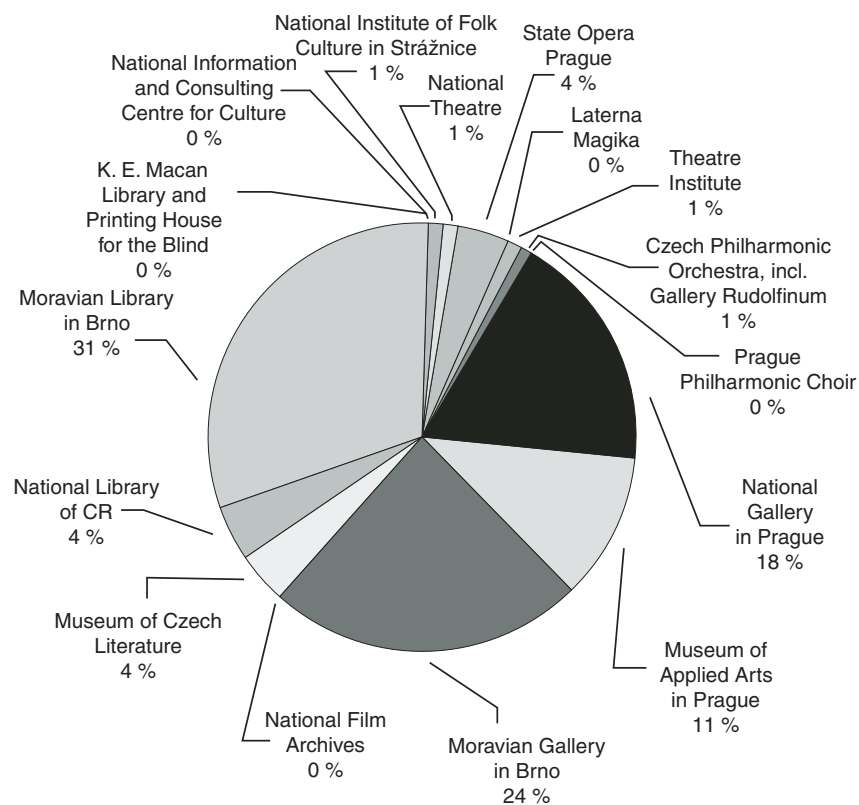
Palace and built an extension onto the Pražák Paláce at a total cost of 243 794 000 Czk. The Museum of Applied Arts spent 107 596 000 Czk out of the state budget on the reconstruction of its buildings. The Museum of Czech Literature received 41 831 000 Czk for the reconstruction of the Hvězda Summerhouse and Gamekeeper's Lodge.

The biggest investment project in the past decade was the construction of the new building for the Moravian Library in Brno, which cost 500 114 000 Czk, while the National Library of the Czech Republic received 269 539 000 Czk to repair the Clementinum, the Filipov Castle and the Central Depository in Hostivař. The third library to receive support was the K. E. Macan Library and Printing House for the Blind, which received 15 million Czk to purchase a building on Ve Smečkách street.

In addition, relatively low sums were also invested into theatres founded by the state. The State Opera Prague received a grant of 78 393 000 Czk to purchase the property it sits on and for renovations and repairs of the building, and the National Theatre received 24 927 000 Czk to repair the attic of the Church of St. Anne, the building of the Estates Theatre, and the studios, workshops, and historical and service buildings of the National Theatre. Extensive repair work on the buildings of the National Theatre and the State Opera Prague is already planned.

Some governmental organisations of the MC did not draw on the funds available under these programmes at all: the National Film Archives, which does not have a building of its own in Prague (which fundamentally limits its investment opportunities); the Prague Philharmonic Choir, which does not have its own building (it is based in the National House in Vinohrady, which is the property of the State Fund of Culture) and the National Information and Consulting Centre for Culture, which leases its space. However, there also exists a regional programme in which regional institutions can draw from the programme “Support for the Development and Renewal of the Material-Technical Infrastructure of Regional Cultural Institutions”. Under this programme the MC administers only funds for investment activities that have been assigned to this programme on the basis of an amendment to the act on the state budget proposed by members of the Parliament of the Czech Republic.

MC Subsidies in 2000 – 2004 to Existing Governmental Organisations as part of Programme Funding (ISPROFIN)



Summary of the Subsidies provided by the MC to Existing Governmental Organisations operating in the sphere of the arts in 2000–2004 from the Programme Funding Information System (ISPROFIN) – investment and non-investment funds (in thous. of Czk)

	2000	2001	2002	2003	2004	2000–2004
National Theatre	2 000	2 488	3 959	0	1 860	10 307
State Opera Prague	2 100	10 163	15 477	8 188	0	35 928
Laterna Magika	0	0	0	0	0	0
Theatre Institute				4 805	6 600	11 405
Czech Philharmonic Orchestra including the Rudolfinum Gallery	0	0	0	4 369	900	5 269
Prague Philharmonic Choir	0	0	0	0	0	0
National Gallery in Prague	11 537	1 074	8 070	94 138	41 800	156 619
Museum of Applied Arts in Prague	22 500	17 200	13 361	37 757	6 978	97 796
Moravian Gallery in Brno	122 853	84 065	0	0	0	206 918
National Film Archives	0	0	0	0	0	0
Museum of Czech Literature	2 585	615	2 153	4 249	21 272	30 874
National Library of the Czech Republic	9 810	0	3 000	18 682	0	31 492
Moravian Library in Brno	236 683	30 656	0	912	0	268 251
K.E. Macan Library and Printing House for the Blind	0	0	0	0	0	0
National Information and Consulting Centre for Culture	0	0	0	0	0	0
National Institute of Folk Culture in Strážnice	1 000	1 200	1 200	3 000	2 200	8 600
TOTAL						863 459

Unfinished Cases

The process of privatising, liquidating and dissolving organisations founded by the MC has not yet in all cases reached completion. Since 1998 the final 21 organisations have been submitted to liquidation or privatisation. Of these the 2005 Exhibition Management, the state exhibitions enterprise, had not yet been liquidated, nor had the organisations that are returning to liquidation from bankruptcy proceedings in that the administrators of bankruptcy assets usually do not leave the liquidators sufficient financial resources to complete privatisation, that is, until its removal from the commercial register. Such organisations include the former state enterprises Film Industry (Filmový průmysl s. p.), in liquidation; Books (Kniha s. p., Brno), in liquidation; Books (Kniha s. p., Liberec), in liquidation; Book Wholesalers (Knižní velkoobchod s. p.), in liquidation; and Arts and Crafts Centre (Ústředí uměleckých řemesel), in liquidation. In addition, Arts and Crafts Brno (Umělecká řemesla Brno), which is still the subject of a restitution dispute that dates back to 1992, is still in the process of privatisation.

Summary of organisations liquidated and privatised since 1998	Status at the end of 2004
Avicenum zdravotnické nakladatelství (Avicenum Medical Publishers)	
Čs. film export n. p. (Czechoslovak Film Export)	
Edition Supraphon s.p. (Supraphon Music)	
Filmový průmysl s. p. (Film Industry)	In liquidation – bankrupt
Kniha s. p. Brno (Books Brno)	In liquidation – bankrupt
Kniha s. p. České Budějovice (Books České Bud.)	
Kniha s. p. Liberec (Books Liberec)	In liquidation – bankrupt
Kniha s. p. Olomouc (Books Olomouc)	
Kniha s. p. Pardubice (Books Pardubice)	
Kniha s. p. Plzeň (Books Pilsen)	
Knižní velkoobchod s. p. (Book Wholesalers)	In liquidation – bankrupt
Odeon n. p.	
Pragokonzert	
Projektová a inženýrská organizace kultury s. p. (Projects and Engineering in Culture)	
Státní nakladatelství technické literatury n. p. (State Technical Publishers)	
Středočeské nakladatelství a knihkupectví s. p. (Central Bohemia Publishers and Booksellers)	Removed from the Commercial Register
Umělecká řemesla Brno (Arts and Crafts Brno)	In the privatisation phase
Ústředí lidové umělecké výroby (Folk Arts Production Centre)	
Ústředí uměleckých řemesel (Arts and Crafts Centre)	In liquidation – bankrupt
Výstavnictví s. p. (Exhibition Management)	In liquidation
Zahraniční literatura (Foreign Literature)	Removed from the Commercial Register

2. Strengths, Weaknesses, Opportunities and Threats (SWOT Analysis)

Strengths

- The arts are the **vehicle of national identity and the integrity of the citizens of a country**.
- The artistic wealth of the Czech Republic has the capacity to **attract attention** abroad.
- The arts are a source of **enormous human potential**¹⁵.
- **The country's characteristic artistic traditions boast:**
 - artistic figures of world renown
 - a wealth of creative and interpretative work in the area of classical music
 - a strong filmmaking tradition, including animated and children's films
 - a theatrical tradition that has historically had a strong civic-political dimension and at the same time has always represented and served as a community forum
 - the success abroad of Czech non-professional artistic ensembles, and the abundant ranks of such groups that exist
- The arts have the **capacity to overcome prejudices and transcend borders**, especially language borders – through music, dance, visual arts, and other forms of expression that are not based in linguistic expression; they can also cross mental borders, owing to their nature of searching for innovative forms of expression and innovative ways of thinking, and geographical borders, primarily owing to the new technologies that enable their distribution and export.
- Artistic organisations like theatres, opera houses, and concert and exhibition halls are **important elements that have an impact on the community and shape the city they are located in**.
- The existence of a **supply** of cultural events, festivals, shows, exhibitions, the unique nation-wide system of talent auditions in the sphere of the non-professional arts, professionally backed by NIPOS.
- The existence of an **accessible network** of theatres, libraries, museums, opera houses, orchestras, art cinemas throughout the Czech Republic as a part of the country's infrastructure.
- The existence of **structured subsidy programmes** under the MC evaluated by experts, which support the advancement and presentation of contemporary arts.
- The activities of the Theatre Institute, which is an umbrella body for professional theatrical organisations and the office of the EU **Culture 2000 programme**; the acti-

¹⁵ From the Strengths of the Strategy of Sustainable Development of the Czech Republic (Government resolution No. 1242 dated 8th December 2004, the chapter on "The Social Pillar").

vities of the Czech Film Chamber o. p. s., under which the office of the EU's MEDIA Desk CR programme is run and the Czech Film Centre; **ProCulture**, a centre of Open Society o. p. s., which collects and disseminates information on opportunities for artists and on Czech and European cultural policy.

Weaknesses

- A lack of **funds** at all levels of public administration and their poor integration, and an inadequate amount of budget funding for the MC in relation to the state budget.
- inadequate and ineffective tools for **obtaining extra-budgetary resources**.
- Inadequate **regulatory and motivational tools** to facilitate reinvestment within the system of the arts.
- An underdeveloped philanthropic environment and **poor access to donors** for not-for-profit minority genres, which are unable to provide sponsors and patrons with a large amount of publicity and visibility.
- A long-term lack of understanding about the role of arts in society, especially their role as an essential part of education and as a developmental factor; **the quality of culture is erroneously not conceived as a general indicator of the level of learning and education in society**¹⁶
- The persistent absence of a **social dialogue** about contemporary arts and the absence of a public reflection of the arts leading to an increase in interest in the arts.
- **An underappreciation of the significant role** of artistic activities in preventing the occurrence of socio-pathological phenomena and contributing to overcoming such phenomena.¹⁷
- No **multi-year financing** of artistic organisations and projects has been put into practice and there is no supportive cooperation between entities or effective pooling of sources.¹⁷
- The lack of any targeted support to **promote Czech arts abroad**, the absence of a quality showcasing of Czech arts at international meetings, the absence of **cooperation with bodies outside the country**, and the lack of a clear pro-export policy.
- **Limited possibilities for purchasing quality and financially demanding art projects and works** from abroad, and problems covering the fees for copyright and honoraria connected with the work of top foreign artists.
- **The absence of a subsidy programme** to support the presentation of contemporary art in museums, galleries and exhibition halls.
- **Inadequate support and promotion of young Czech authors**, and for the creation and presentation of works by contemporary authors in the Czech Republic and abroad.

¹⁶ Ibid.

¹⁷ Ibid.

- **Some weaknesses in the area of artistic management**, the demotion of some positions essential for ensuring that the presentation of artistic works is executed with high quality – for example, curators, dramaturgs.
- The inadequate **coordination of activities and the poorly targeted promotion** and distribution of art, which is accompanied by the absence of quality information on contemporary art and trends and developments at the European level.
- Losses in relation to the exercise of copyright owing to the abuse of new technologies (especially new ways of saving data and new reproduction technology).
- The strong influence of consumer society, which in the interest of short-term returns on investment and ensuring a profit affects the nature of art production to the detriment of freedom of expression.
- **The lack of interest and persistent resistance on the part of society** to contemporary innovative art forms, with the prioritising of easily comprehensible and traditional art forms.
- The **underestimation** of film as a distinct **artistic** discipline.
- The heavy **concentration of the arts** and art projects in main urban centres.
- The limited attention devoted to the **accessibility of public cultural services in the sphere of the arts**¹⁸ **so that they reach various strata of the population**.
- **The absence of information and documentation centres** focusing on the arts, inadequate mediation of information, especially in the field of the visual arts and architecture, literature and film.
- With the exception of theatre, classical music, and non-professional arts, the **absence of strong and active umbrella organisations**.
- **A lack of modern and technically well-equipped buildings** for the creation and presentation of contemporary artwork; there is a notable absence of multi-disciplinary small-capacity halls, large-capacity concert halls, exhibition spaces designed to accommodate the presentation of contemporary visual arts, including new media, a centre of literature, and other institutions capable of engaging in international cooperation at the highest levels and with the capacity to join the cultural infrastructure of Europe.
- **The limited capacity of non-governmental not-for-profit organisations** to flexibly and with high professional standards complement the work of governmental organisations and commercial organisations.

Opportunities

- **Make the arts accessible** to all people given that culture is a fundamental part of the society based on knowledge and is an important developmental factor¹⁹ for enhancing the cultural potential of humankind.

¹⁸ Ibid.

¹⁹ Ibid.

- **Make better use of artistic potential for providing cultural services and for presenting art within the existing network** of theatres, opera houses, museums, galleries, libraries, movie theatres, cultural centres, recreational facilities for children and young people, and other cultural organisations throughout the Czech Republic.
- **Reinforce and enhance the current infrastructure**, increase the capacity of non-governmental organisations and render them capable of flexibly, openly, and rapidly responding to current trends and expressions in art in the Czech Republic and abroad.
- **Employ new extra-budgetary resources** in support of the arts, such as lotteries or the use of a portion of the income from copyright fees, particularly for use in highlighting contemporary art by young artists.
- **Strengthen the position of the arts and culture** as an important sector of the economy, taking into account its contribution to GDP, regional development, and employment.
- Support projects that generate **knowledge, opportunities for self-improvement and education, and quality ways in which to spend one's leisure time.**
- **Cultivate ethical values** in harmony with European cultural traditions.²⁰
- **Involve individual projects more in structural and regional development.**
- **Increase productivity and competitiveness** within the EU, with a view to the opportunities for developing so-called cultural industry²¹
- Use the development of the economy and especially of industry to the application and spread of cultural values, for example, product design, architecture, marketing, etc.
- **Recognise architecture** as one of the basic components of the cultural environment, acknowledge modern architecture as a part of our cultural heritage, strengthen the public's relationship to architecture.
- Place greater emphasis on the presentation of the **art in public spaces** or in unorthodox places and spaces, with the aim of involving the public in a public dialogue about not only the arts and artistic topics but also about the function and possible uses of public space and certain buildings and the cultivation of urban spaces.
- Make better use of **historical and industrial buildings for presenting the arts** – musical and theatrical productions, exhibition projects.
- Draw more funds from the EU community programmes (the Culture Programme, the MEDIA Programme, and a new programme, MEDA, for local and regional cultural activities).
- Obtain financial resources from the EU Structural Funds for the 2007–2013 programme period.

²⁰ Ibid.

²¹ Ibid.

- Implement the financial mechanisms used in the European economic area and in Norway, where cultural heritage is one of the country's priorities for the 2005–2009 programme period.
- Determine and duly implement indirect financial and non-financial tools of support for the arts that contribute to the sustainability of existing organisations and to the development of new ones.

Threats

- Continued **underestimation of the economic significance of the arts and culture in general** as a developmental factor, the under-appreciation of the importance of investment in this sphere, and the under-appreciation of the significance of so-called cultural industries and the need for their development.²²
- **The erroneous perception of the arts and culture** as unproductive sectors, and not as a factor in the development of human potential²³ and economic development.²⁴
- **Inadequate attention paid to the accessibility of arts of various forms and content and cultural services in general** is harmful to the development of the arts, social ties, and potential economic sectors – tourism, and cultural and creative industry.
- **A limited ability to compete** in the newly expanded international artistic market depreciates the value of cultural heritage, investment commodities in the form of artistic works, and the value of copyright.
- **Artistic expression at a high international level can be rendered inaccessible** as a result of a lack of financial resources and the limited capacity of cultural institutions.
- **The inadequate standing of the arts and culture in the political agenda** results in the marginalisation of the arts and culture and ultimately to the erosion of this sphere.
- **The Czech Republic can come to occupy a provincialised position in the EU** owing to limited international cooperation and the inability to participate in a sovereign and autonomous manner in international art projects.

²² The Economic Growth Strategy (Resolution No. 984 of the Government of the Czech Republic dated 20th July 2005).

²³ Ibid.

²⁴ Ibid.

3. Evaluation of the Efficiency of Existing Development Programmes

Grant proceedings and subsidy programmes for the support of the arts are professionally conceived and are formally structured according to type of project. Support for professional arts is awarded primarily to creative, presentational, publication or research projects. Given that one of the main aims of contemporary cultural policy is freedom of artistic expression, the state's occupational approach to support for the arts, considering the fact that the state concept of support for the arts is now being formalised for the first time, seems to be the appropriate choice. This is primarily owing to the deep skepticism towards the general effectiveness of the concept of support for the arts, which in recent years was handicapped by the stigma it inherited from the communist era, with its inappropriate politicisation of the arts and its cultural ideology, and by the need to "de-nationalise" the sphere of the arts.

Grant proceedings for the support of the non-professional arts are more diversified in nature and purpose. In addition to contributing financially to the organisation of showcases and festivals in various artistic fields it also achieves a social and integrative role. This involves, for example, financial support for the cultural activities of physically disabled citizens and ethnic minorities living in the Czech Republic and for the integration of foreigners (grants are intended to support Czech non-professional artistic bodies in establishing foreign contacts), and in support of local culture (support for local cultural traditions).

As a result of the transformation of the state administration, support for some artistic activities was transferred to the competence of the regions and the municipalities. These self-governing units thus assumed responsibility within their geographical jurisdiction for the development and quality of the arts. However, this has not yet always been adequately reflected in their grant and other support programmes. The aim of NIPOS and the Theatre Institute, which is the guarantor of the arts on behalf of the MC, is to provide detailed information on the system of development of these activities and contribute to the improvement of support programmes in the municipalities and the regions.

The MC opens the Cultural Activities Grant Programme generally once a year. At present the grant programme is regarded as a tool of support that is run transparently and competently. Individual application proceedings are administered by several different fields: the section of art and libraries, the section of media and audiovisual work, the foreign section, and the section of regional and ethnic culture. Grants awarded on the basis of initiatives put forth by MPs are not a systemic part of the grant policy of the Ministry of Culture.

In addition, the MC offers investment grants within the framework of Programme Funding (Informační systém programového financování, ISPROFIN). The outcome of the projects are published in the annual report of the MC.

The programmes presented below are publicly announced, applications are assessed on the basis of pre-determined criteria, usually in two rounds, and with a secret point system, by external expert commissions comprised of members from diverse professional backgrounds.

Alongside the Programme of Support for Czech Theatres (since 1996) and the Programme of Support for Symphony Orchestras and Choirs (since 1997), which in 2003 were transformed into the Programme of State Support for Professional Theatres and Professional Symphony Orchestras and Choirs, the budget of which has from the outset been filled in inadequately, for fi-

nancial reasons the Programme for the Presentation of Contemporary Artwork in Galleries, Museums and Exhibition Halls has not yet been opened.

Chapter 334 in the state budget, the chapter for culture, has in recent years fallen to comprise less than 1% of total state budget expenditures. In reference to the amount of resources devoted on average in EU countries,²⁵ Cultural Policy aims at reaching a level of 1% of the state budget. In 2005 the budget of this chapter was 0.63%, while culture alone, not including churches or religious groups, constituted only 0.49% of the state budget. The share of expenditure on grants, the awarding of prizes, and support for science and research in the field of the arts has in the past eight years hovered between 2.5 and 6.6% of the MC's budget. Support for the creation of artwork and advancing its presentation in the Czech Republic suffers from very limited financial resources, which substantially reduces the effectiveness of development programmes.

It is necessary to take into account that private and not-for-profit entities in the sphere of art production are continually growing in importance and occupy an important and, for the artistic infrastructure, essential function – for example, in the publication of literature and cultural and artistic periodicals, in organising festivals and showcases, organising exhibition projects, in searching for young talents and experimental projects. All this in a situation where financing from extrabudgetary sources or foundations has yet to be successfully established and the opportunities for cooperation with the commercial sphere are in many cases problematic in practice, owing to the limited motivation offered through tax deductions and owing to the lack of interest among commercial entities in not-for-profit projects that are not of prime interest.

Support from local and regional budgets is often directed at activities of regional significance. Conversely, state support tends to go to projects of international and national significance, and it also focuses on quality regional events with exceptional dramaturgical or professional content. For these activities support from the MC is still vital, and in addition to providing financial resources it also accords them considerable prestige and puts them in a better position for obtaining other donors at the local level. State support thus has the power to grant legitimacy to new projects and recognition to existing ones.

Grant proceedings are announced annually in conformity with the act on budget rules and also in conformity with the Main Areas of State Subsidy Policy towards Not-for-profit Organisations, a document approved each year by the government of the Czech Republic in a government resolution. The grants are provided on the basis of the Government Rules for Providing Grants out of the State Budget of the Czech Republic to Non-Governmental Not-for-Profit Organisations by Central Bodies of State Administration, which the government approved in Resolution No. 114 on 7th February 2001, and on the basis of the internal regulations of the MC.

Grants in the Sphere of Professional Theatre, Dance, Music, Visual Arts and Literary Culture

Alongside the rules of general validity the grants adhere to the internal regulations of the MC and also to Directive No. 14/1999, issued by the Minister of Culture, on the basis of which Rules of Procedure were issued for use by the grant committees and sub-committees of the MC that evaluate and recommend selected projects for support.

²⁵ See Appendix No. II., pp. 87-89.

General Criteria for Evaluation Used by the Committees of Experts in All Disciplines:

- How the project contributes to the field (innovative dramaturgy, a high artistic and professional standard, the concept of the project, etc.)
- Geographical scope (required national or international significance, or at least of significance beyond the regional level)
- How realistic the project and its anticipated costs are
- Whether the project corresponds with the set theme in the given field
- Substantiation of use of the grant in the preceding period, including its accounting

The themes that are set for individual artistic fields have been revised regularly since 1992 in collaboration with advisory bodies – grant committees. The grant proceedings currently take the following form :

– Professional Dramatic Arts

Grants are intended to support public-benefit, non-commercial projects in the fields of drama theatre and musical theatre, puppet theatre, alternative theatre, and interdisciplinary projects that contain significant theatrical components

– Professional Dance, Dance Theatre, and Non-verbal Theatre

Grants are provided from an application procedure that was opened as an independent category for the first time in 2004 and are intended to support public-benefit, non-commercial projects in the fields of dance, dance theatre, non-verbal theatre and interdisciplinary projects that contain significant components of dance or movement

– Professional Musical Arts

Grants are intended to support public-benefit, non-commercial projects in the fields of music festivals, showcases, series, groups and ensembles that focus on innovative dramaturgy and contemporary Czech work, creative workshops, the publication of periodicals and non-periodical publications, music news, and documentary activities and interdisciplinary projects that contain significant musical components.

– Professional Visual Arts, Architecture, Design and Applied Arts

Grants are intended to support public-benefit, non-commercial projects from the fields of exhibition projects and artistic residencies, galleries and professional organisations, applied arts and design, the publication of periodical and non-periodical publications, artistic workshops and symposia, and interdisciplinary projects that contain significant visual-art components.

– Literature

Support is divided into the following divisions of grant proceedings: the publication of non-periodical literature; support for the publication of Czech literature; literary periodicals and other literary events; support for the creation and publication of a literary work (two-year grants); support for the publication of Czech literature abroad; and Czech libraries, which provides support for the purchase of non-commercial titles in the field of Czech literature, illustrated works for children and youth, and works in the field of literary theory and criticism for professional public libraries, registered in accordance with Act No. 257/2001 Coll., on Libraries and the Rules for Running Public Libraries and Information Services (the Library Act), as amended in Act No. 1/2005 Coll.

The Programme of State Support for Professional Theatres and Professional Symphony Orchestras and Choirs

This programme emerged out of a fusion of the Programme of Support for Czech Theatres (1996–2003) and the Programme of Support for Professional Symphony Orchestras and

Choirs (1997–2003) and in connection with the completion of reform of regional administration. It is based on multi-source financing, wherein the largest share is usually contributed by the municipalities where the given companies or ensembles are based, while regional activities are supported by the region and the state provides support for activities that are national or international in scope and activities that are directed at the artistic development of the dramatic or musical arts (new production, support for young artists, etc.).

Programme terms :

- a minimum percentage of self-sufficiency in the preceding budgetary year:
 - a) theatre – governmental organisation 13%, orchestra – governmental organisation 15%
 - b) theatre, orchestra, choir – non-governmental, not-for-profit organisation 30%
 - c) theatre, orchestra, choir – other legal entities 80%
- a minimum number of theatre performances or concerts in the preceding budgetary year
- 100 independent theatre performances (opera and dance/ballet 50), 60 orchestral concerts, 50 choir concerts
- financial participation of an autonomous body in the preceding budgetary year (in the case of a governmental organisation a public administrative body other than the founder)
- functioning as a permanent theatrical or musical entity for at least three consecutive years.

Artistic Residencies

Since 1999 one to three-month support for artistic residencies at the Egon Schiele Art Centre in Český Krumlov have been open to visual artists and set designers aged 35 and under and to students in their final year of study at a post-secondary institution specialising in the arts.

Since 2004 the Theatre Institute has been authorised by the MC to organise residency exchange programmes with various foreign institutions targeting artists from the fields of theatre, music and the visual arts.

Grants for the Fields of Audiovisual Arts and the Mass Media

Grants are provided for film, television, radio and multi-media festivals, showcases and exhibitions, seminars, the publication of film journals, the production of television and radio programmes, the distribution of artistic films, and for projects aimed at promoting Czech cinematography abroad.

Grants for Cultural Cooperation Abroad

A report of the MC from 1999²⁶ documented the gradually developing direct cooperation between various non-state entities, both in the form of long-term ties and in connection with individual occasions and opportunities, noting that inadequate knowledge of legal regulations, insufficient financial backing, and a lack of experience can lead such entities into difficult situations. Grant selection proceedings have since 2000 been regularly inviting applications from cooperative projects originating outside the Czech Republic and aimed at coopera-

²⁶ *Sborník statí o kultuře v České republice po roce 1989* [Readings on Culture since 1989]. Praha: Ministerstvo kultury České republiky, 1999.

tion with Czech entities, and from collaborative projects originating inside the Czech Republic and aimed at cooperation abroad, and since 2002 also for projects organised cooperatively between entities based in the four Visegrád countries and for projects supported by the EU Culture 2000 programme.

Science and Research

The programme, proposed for the period between 2006 and 2011, is aimed at a scientific and documentary evaluation of developments in the fields of the musical, dramatic, and visual arts, literary history, theory and criticism, and analytical sociological studies of the current state of culture in the Czech Republic, and an investigative scientific evaluation of the mass media and audiovisual arts. The programme uses a Research and Development Information System (IS VaV), in which the coordinators of research projects supported under the programme out of funds from the state budget make public the results of their research and make available to the public data and information from the project's outcome.

Grants in Support of Non-Professional Artistic Activities

– Support for non-professional artistic activities (Cultural Activities)

The programme is open only to civic associations and since 1995 has been accepting applications for grants in five groups of arts: drama and literature, music, dance (including folklore), audiovisual arts, and children's arts. The programme is designed to support:

- Artistic events of national significance, selected on the basis of a national selection procedure, and comprehensive occasional or short-term workshops
- Talent auditions where the selections are made for one of the national showcases, and competitions supported by the MC (as of 2006 the grant amounts are capped)
- Projects of demonstrable significance for a given field and involving at least two regions as defined in the Constitutional Act No. 347/1997 Coll., on the Establishment of the Territorial Self-Governing Units and on Amendments to the Constitutional Act of the Czech National Council No. 1/1993 Coll., Constitution of the Czech Republic

Preference is given to projects that are educational, inspirational, and innovative in nature, and not first-year projects. The projects are evaluated by an external committee (one for each field), the members of which are drawn predominantly from civic associations.

– Support for the cultural activities of disabled persons

The goal of this programme is to fulfill the objectives of the National Plan for Ensuring Equal Opportunities for Citizens with Disabilities (Resolution No. 256 of the Government of the Czech Republic dated 14th April 1998); part of the programme is support for projects aimed at the implementation of the National Programme to Prepare for an Aging Population 2003–2007 (Resolution No. 485 of the Government of the Czech Republic dated 15th May 2002)

The programme has been running and inviting applications since 1993 and since 1996 it has been intended only for civic associations organising cultural activities at which disabled persons present their artistic work or perform, among themselves and for the general public, including various forms of art therapy and activities aimed at eliminating architectural and transportation barriers.

– Support for the cultural activities of ethnic minorities

This is an independent program of the MC open to physical and legal subjects that have been demonstrably engaged in activities intended to benefit ethnic minorities for at least one

year and whose activities are at least partially related to artistic work (support for theatre and dance ensembles, choirs and musical groups, etc.).

The MC is the guarantor of the programme of Support for the Distribution and Reception of Information in the Language of an Ethnic Minority, or Primarily in the Language of an Ethnic Minority, or about an Ethnic Minority in Society. This programme has been part of the MC's agenda since 2002, prior to which it was run under the Ministry of Finance. Funds are provided in two areas:

- a. for the periodicals published in the language of an ethnic minority or primarily in the language of an ethnic minority or information about ethnic minorities in society
- b. for radio or television broadcasting in the language of an ethnic minority, or primarily in the language of an ethnic minority, or information about ethnic minorities in society.

– Support for the integration of the Roma community

This programme has been open since 2002 and was established in connection with the Report on the Situation of the Roma Community in the Czech Republic (see Resolution No. 687 of the Government of the Czech Republic dated 29 October 1997 in relation to the Report on the Situation of the Roma Community in the Czech Republic and on the Current Situation in the Roma Community), the Proposed Policy of the Government towards Members of the Roma Community to Facilitate the Integration of the Roma Community into Society (see Resolution No. 279 of the Government of the Czech Republic dated 7th April 1999), the Policy of the Government to Facilitate the Integration of the Roma Community into Society (see the Resolution of the Government of the Czech Republic No. 599 + No. 279/1999 dated 14th June 2000), and Provisions for Establishing a Discussion in Society and in Parliament on Improving the Relationships between the Majority Society and the Roma Minority (see Resolution No. 994 of the Government of the Czech Republic dated 11th November 2000). The programme constitutes a single budget item in the budget of the MC and it is open to legal subjects that have been engaged in activities in support of the Roma community for at least one year, focusing on artistic, cultural, and educational projects, the study of Roma culture and traditions, documentary and editorial activities, film, television and radio productions, and multi-ethnic events. The Museum of Roma Culture also contributes significantly to the integration of the Roma community. It was founded in Brno in 1991 at the initiative of Roma and non-Roma intellectuals and experts and with the support of the MC. In its mission and work it is a loose continuation of an earlier organisation, the Gypsy-Roma Union (Svaz Cikánů-Romů) that existed in 1969–1973. It is the first and thus far the only institution of its kind in Europe. It focuses on professionally gathering materials and documents that provide information on the material and intellectual culture of the Roma and their co-existence with the majority society, from earliest times to date. In 2005 the Museum of Roma Culture was transformed from a benevolent corporation to a governmental organisation of the MC.

– Support for the integration of foreign nationals living in the Czech Republic and aimed at the areas of culture, traditions, and religion

The programme was opened for the first time in 2001 after the introduction of Resolution No. 1266 of the Government of the Czech Republic dated 11th December 2000, on the implementation of the Principles of the Concept for the Integration of Foreign Nationals in the Czech Republic and the implementation of the Proposed Concept for the Integration of Foreign Nationals in the Czech Republic, and Resolution No. 40 of the Government of the Czech Republic dated 10th January 2001, on updating the Concept for a Cultural Policy in the Czech Republic. It is open to physical and legal subjects and is intended to support public-benefit projects that contribute substantially to the transmission of cultural values, the protection of human rights, the promotion of democracy and humanism, tolerance, and harmonious co-existence in a multi-cultural society.

– Support for traditional folk culture

The programme has been open since 2001 and supports activities aimed at identifying, recording and presenting elements of traditional folk culture. Support is granted in two categories:

- For legal and physical persons organising projects designed to protect various fields of traditional folk culture
- For regional professional institutions engaged in the preservation of traditional folk culture, whose competence is derived from the regional authorities in conformity with the Concept for the More Effective Conservation of Traditional Folk Culture, approved in Resolution No. 571 of the Government of the Czech Republic dated 11th June 2003

– Support for the development of foreign ties in the sphere of non-professional artistic activities

This grant programme has been open since 2001 just to civic associations and for activities in the following five areas:

- all forms of amateur theatre, including children's theatre
- all forms of dance, with the exception of folk dance
- woodwind, symphonic and chamber orchestras
- children's and adult folk ensembles
- children's and adult choirs

Support is intended only for artistic groups and ensembles that have demonstrated a high standard of proficiency at national arts showcases, festivals or competitions and that travel to selected prestigious events outside the Czech Republic. Exchange and commercial tours to events of only local significance are not supported. The programme invites applications from physical and legal subjects, each for only one project. Projects are evaluated by an independent committee (one for each area of support), in which the relevant Czech branches of international non-governmental organisations are represented. Groups or ensembles that are selected for support receive a contribution that covers no more than 70% of the costs connected with its transportation abroad. Individuals are sent abroad by NIPOS, on the authority of the MC. In conformity with the Budgetary Rules it supports the travels of teachers, jury members, seminar participants, and delegates to meetings of bodies of international non-governmental organisations. It covers only the costs of transportation, as the total volume of targeted funds in the programme's budget are limited (250 000 Czk annually). The Czech branches of international non-governmental organisations and expert councils of institutions are consulted on the programme. Up until 2000 NIPOS also supported the travel of groups/ensembles in the same manner and with the same volume of funds.

Other Means of Support

Awards in the Field of Professional Arts

State Prize for Literature

State Prize for a Work of Translation

The state prizes have been awarded annually since 1995, following on a tradition that was established during the First Republic (they were founded in 1920). The prizes are awarded to the best original Czech literary work and the best literary translation from a foreign language into Czech. The state prize can also be awarded for the best body of literary work and for work in the field of the translation of literary works.

Prize for the Most Beautiful Czech Book of the Year

The prize has been awarded annually since 1964 to a non-periodical publication, not previously published in its given graphic and artistic form, and evaluated as a technical product and functional object.

Artis Bohemiae Amicis Medal

The medal has been awarded by the Minister of Culture since 2000 for spreading the good name of Czech culture not only in the creative and interpretative spheres but also in the area of promotion and presentation abroad.

Prizes awarded by the Ministry of Culture for Achievement in the Fields of Theatre, Music, the Visual Arts, and Architecture

The MC has been awarding these prizes annually since 2003 for outstanding creative or interpretative work or for long-term artistic merit in the fields of theatre, music, visual arts, and architecture. They can be awarded to physical or legal subjects. Any citizen of the Czech Republic over the age of 15, artistic group or artistic institution is eligible for the award.

The Ministry of Culture Prize for Artistic Activities

is awarded in the fields of :

- theatre and literature,*
- traditional folk culture and folklore,*
- music,*
- audiovisual arts and visual arts,*
- dance,*
- children's artistic activities.*

In conformity with Government Decree No. 5/2003 Coll., on Awards Given by the Ministry of Culture, these prizes have been awarded since 2003 for lifetime contribution to the advancement of the given field or for outstanding artistic work. Any citizen of the Czech Republic over the age of 15 is eligible for the award. Nominations can be made by physical or legal subjects, and in each sphere candidates are assessed by an independent committee. One winner is selected annually in each sphere.

Award of the Tradition of Folk Arts and Crafts

This project was launched in 2000 with the aim of supporting the preservation of traditional arts and crafts technology, and the documentation and transmission of those skills and knowledge to pupils in these fields. This award is a Czech version of the UNESCO project Living Human Treasures. Since 2001 it has been awarded each year to five artists on the occasion of the National Launch of the European Heritage Days. Nominees are evaluated by an independent committee.

Co-Organized Activities

Until 2003 the MC was the co-organiser of a number of selected activities, including, for example, projects in the fields of:

- music: Prague Spring International Music Festival, International Music Festival Brno, International Music Festival Janáček's "Máj", International Opera Festival Smetana's "Lito-myšl", Classic Prize, Festival Alternativa, etc.
- theatre and dance: International Festival Theatre, Theatre of European Regions (Hradec Králové), Mateřinka (Liberec), Tanec Praha dance festival, Skupa Pilsen, A. Radok Award, Festival of Music Theatre, International Theatre Festival "Na hranici", etc.
- visual arts and architecture: exhibitions of the work of finalists in the Jindřich Chalupský Prize, Grand Prix of the Community of Architects, Art Studios of Český Krumlov and Čimelice
- literature: Prize for the Most Beautiful Czech Book of the Year (Museum of Czech Literature) and the Bohemian Seminar (Society of Czech Writers)

With the authority and financial support of the MC NIPPOS organises in cooperation with towns, cultural organisations, and other entities prestigious showcases and festivals in individual types of professional arts. This involves approximately twenty events annually, a number of which have traditionally been running for many years (Jirásek's Hronov Theatre Festival, FSU Jihlava choir festival, Loutkářská Chrudim puppet festival, Šrámek's Písek experimental theatre festival, and others).

Support for Professional Artistic Projects of Non-Governmental Entities under the MC's Cultural Activities Programme, in 2000–2004 (in thous. of Czk)

Grant division	2000	2001	2002	2003	2004
Theatre	14 886	18 513	15 060	17 044	16 838
Music	9 670	11 148	8 869	11 229	32 145*
Visual arts, achitecture, and design	10 450	11 565	8 855	11 987	15 044
Dance	0	0	0	0	5 870
Publication of non-commercial Czech literature and translated literary works	2 814	2 850	2 167	2 700	3 090
Publication of illustrated children's literature	550	650	500	700	600**
Other literary projects (events, periodicals...)	8 210	8 751	6 729	7 417	11 105
Creation and publication of a literary work	859	644	500	830	620
Translation of Czech literature abroad	1 750	1 430	1 238	1 100	1 935
Czech libraries	2 600	2 600	2 168	1 800	1 900
Participation in international book fairs	2 720	3 410	3 014	6 200	4 374
Programme for orchestras and choirs	15 000	11 000	13 000	12 404	11 104***
Programme for theatres	50 000	3 0000	44 000	35 000	38 600***
Artistic residencies (Český Krumlov)	146	146	146	146	146
Audiovisual arts	5 650	6 156	5 000	5 555	6 330
European City of Culture 2000 – investment	57 950	0	0	0	0
European City of Culture 2000 – non-investment	147 600	0	0	0	0
State awards and prizes of the MC	375	375	375	775	775
Science and research in professional artistic fields	9 011	16 896	13 789	10 566	9 370
Co-organisation of events – professional	15 212	17 800	15 050	13 930	
Support for cinematography	20 900	27 855	47 180	63 321	35 953
Foreign cooperation	4 019	2 945	15 606	13 579	22 689
TOTAL	380 372	174 734	203 246	216 283	168 784

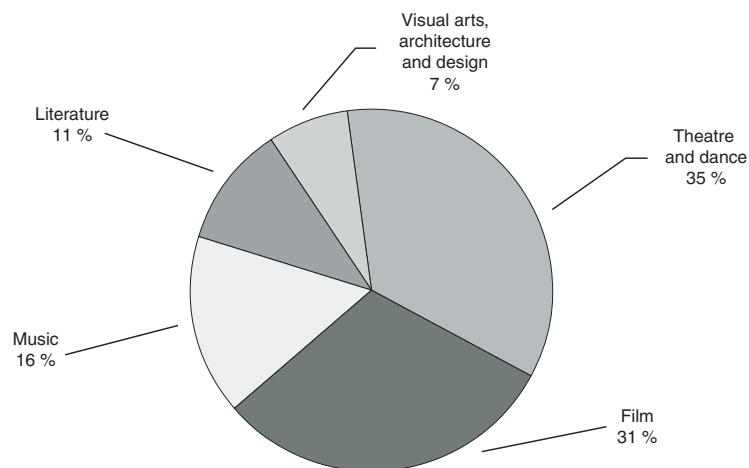
Source: *Sborník statí o kultuře v letech 1998–2003* [Papers on Culture in 1998–2003]. Praha: Ministerstvo kultury, 2004.

* In the field of music the amount of 19 165 000 Czk in 2004 was provided for a special programme of the MC, Czech Music 2004 – An Inherent Part of European Culture.

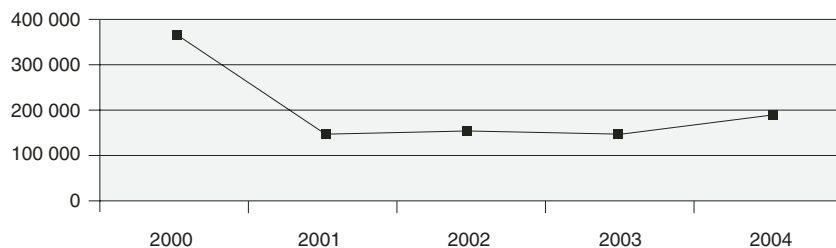
** Support provided for the publication of illustrated children's literature in 2004 is part of the programme for the publication of non-commercial Czech literature and translated literary works.

*** As of 2004 as part of the Programme of State Support for Professional Theatres and Professional Symphony Orchestras and Choirs.

Support provided by the MC to Non-Governmental Entities in Individual Professions in the Arts in 2000 – 2004

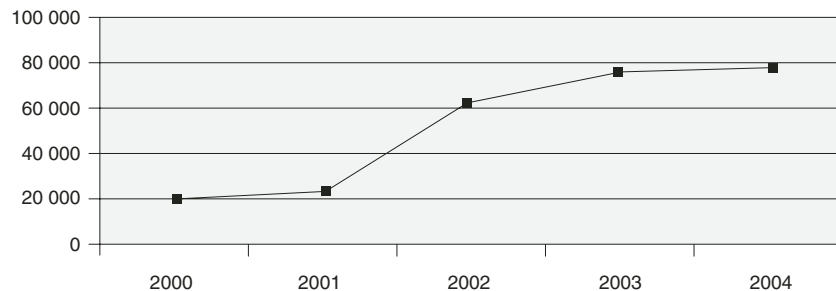


Support provided by the MC to Non-Governmental Entities via Programmes in the Sphere of the Professional Arts between 2000 and 2004 (in thous. of Czk)



Note: Including support of the programme Prague 2000 – European City of Culture.

Support provided by the MC to Non-Governmental Entities via Programmes in the Sphere of Non-Professional Arts between 2000 and 2004 (in thous. of Czk)



Support for Non-Professional Artistic and Cultural Projects of Non-Governmental Organisations under the MC's Cultural Activities programme since 2000 (in thous. of Czk)

Grant division / Grant programme	2000	2001	2002	2003	2004
Support for non-professional artistic activities	5 501	5 115	11 202	12 251	13 658
Support for cultural – non-artistic – interest activities	344	502	479	671	680
Support for the cultural activities of ethnic minorities	9 620	8 220	7 656	11 071	10 162
Support for projects for the integration of the Roma community			1 650	1 985	2 244
Integration of foreign nationals		1 330	1 900	2 932	2 000
Support for the cultural activities of citizens with disabilities	3 774	5 092	5 457	6 030	6 435
Support for foreign ties in the sphere of non-professional artistic activities		250	984	1 116	1 549
Preservation of traditional folk culture, including traditional folk arts and crafts		1 348	1 392	5 000	5 000
Czech Music 2004					2 955
Support for local cultural traditions (anniversaries)	1 312	1 401	1 263	1 786	2 071
Support for the dissemination and reception of information in minority languages			29 810	30 550	29 704
Prizes awarded by the MC in the sphere of non-professional artistic activities		180	150	150	150
Prizes awarded by the MC in the field of traditional folk culture		150	120	120	120
Research and development in the sphere of non-professional artistic activities*				990	1 066
Research and development in the field of traditional folk culture*	1 983	3 421	3 456	4 123	4 548
Total	22 534	27 009	65 519	78 805	82 342

Source: Annual reports of the MC.

* Prizes awarded by the MC in the sphere of non-professional artistic activities and Prizes in the sphere of traditional folk culture have been awarded since 2001.

	Total expenditure from the state budget	State budget expenditures under Chapter 334 – MC	Expenditures on churches and religious communities (CNS)	State budget expenditures under Chapter 334 – MC (not incl. CNS)	Share of expenditures under Chapter 334 – MC on culture in % (i. e. excluding expenditures on CNS)	Share of Chapter 334 – MC out of the state budget	Support for artistic work, presentation, science and research by non-governmental entities under Chapter 334	Support for non-professional activities
2000	627 336 000	5 050 556	732 788	4 326 768	0.69 %	0.81 %	356 925	20 551
2001	685 177 300	5 157 053	916 963	4 240 090	0.62 %	0.75 %	146 329	23 258
2002	739 622 657	4 879 882	971 097	3 908 785	0.53 %	0.66 %	155 616	61 793
2003	795 362 391	6 159 905*	1 130 844	5 029 061	0.63 %	0.77 %	152 962	73 392
2004	869 050 652	6 045 710	1 248 194	4 797 516	0.55 %	0.70 %	186 370	76 458
2005	908 415 643	5 757 145	1 195 036	4 562 109	0.50 %	0.63 %		

* Including the costs from the damage after the floods in 2002, in the amount of 1 billion Czk.

Part B CONCEPT

I. Targets

The Concept for More Efficient Support of the Arts is aimed at the promotion of creative artistic activities, the collection, treatment, preservation and presentation of the arts, at means of ensuring the accessibility of the arts to the public in the Czech Republic and abroad, and at fostering international cooperation in the arts.

Within the framework of this concept the arts are understood as any works, material or non-material, that are created by artists, evolve out of an art-historical tradition, and refer to a specific society by reflecting its cultural and social identity.

Works of art are created and/or interpreted by individuals and groups, and usually exist in one of or a combination of the following artistic fields: theatre, including musical theatre, music, dance, the visual arts, film, new media, and literature.

An artist²⁷ is any individual who creates a work of art or through his/her interpretation is involved in the creation or re-creation of a work of art and who considers his/her artistic work as the primary content of their life and who consequently contributes to the advancement of the arts and culture and who is recognised or strives to be recognised as an artist, regardless of whether or not the individual is a member of any professional union or association.

Qualified professionals and scholars (for example, theatre, music, and literary scholars, curators, historians and critics, archivists, librarians, documentarists, restorers) collect, work with, conserve, and restore the nation's cultural wealth and make it accessible and transmissible to the public.

II. Objectives

The objective of support is to provide for and establish the conditions that are necessary in order for free creative expression and the presentation of artistic works, for their critical reflection, for working with and interpreting the arts, and for the preservation of these works as the nation's cultural wealth and the heritage of future generations. Another objective of the support is also to provide for the continued development of artistic activities and the activities of the cultural entities that manage and oversee the country's cultural heritage.

Individual provisions are therefore aimed at:

- Strengthening the role of art in society.
- Enhancing the presentation of Czech arts abroad and strengthening international cooperation.
- The protection and enhancement of artistic diversity, emphasising support for creativity and endeavouring to provide a balance against the effect of a consumer society.
- Ensuring that the arts are accessible to every citizen (equal access).
- Strengthening the infrastructure of the arts and the investment subsidies to cultural institutions.

²⁷ In conformity with Art. 27 of the Cultural Policy, the definition of an artist takes into account the formal UNESCO definition of an artist, dating from 1980, updated in a report called the Definition of an Artist for Tax and Charity Purposes, prepared by the International Federation of Arts Councils and Culture Agencies in 2002.

III. Instruments

The primary instruments for fulfilling the Concept for More Efficient Support of the Arts in 2007–2013 are:

a) Institutional

- existing cultural institutions founded by the state; existing cultural institutions founded by regional authorities; secondary, vocational and post-secondary schools specialising in the arts; post-secondary departments specialising in research and scholarship in the arts; institutes of the Academy of Sciences of the Czech Republic; non-governmental, not-for-profit organisations focused on culture; and other entities providing services in the field of the arts, which form the structural background that is essential for the identification, presentation, preservation, distribution, documentation, and qualified reflection of the arts.
- International networks and associations that assist Czech member organisations in becoming integrated at the international level, in sharing and exchanging information and experiences, and in participating in cooperative endeavours and in the advancement of specific areas of artistic work and the presentation of artistic work.

b) Economic

direct

- grants from the state budget, contributions from the budgets of the regional and district authorities
- in the case of cultural heritage, in conformity with the act on the conservation of collections (the act on heritage protection, the archive act), in the case of support for public services in conformity with the bill on some types of support for culture and on amendments to certain related acts (ensuring public access to artistic work and cultural heritage)

indirect

- strengthen cooperative funding and funding for multi-year projects from public budgets
- establish comparable circumstances in the area of funding for governmental organisations and not-for-profit organisations (legal-labour relations, social and economic aspects)
- promote philanthropy²⁸, sponsorship²⁹ and patronage³⁰ of the arts, ie. through effective

²⁸ The promotion of corporate philanthropy in the Czech Republic began as part of the Corporate Social Responsibility (CSR) strategy and mainly developed among foreign companies. CSR began to be used as a term in advanced countries during the 1990s. The EU Lisbon summit in 2000 adopted the position that this concept should be strategically promoted and advanced.

²⁹ Sponsoring is based on a commercial advantage for both parties. In practice it often occurs in the form of an agreement on advertising and on the provision of services by cultural entities to other entities outside the cultural sphere. Sponsoring is a part of corporate business strategy. The sponsor purchases the right to be linked to a particular cultural event and use it for its own promotional purposes. In the Czech Republic it is understood as a form of philanthropy.

³⁰ A patron of the arts is a person that supports projects or events out of their personal capital (not with corporate funds).

ve cooperation with public administration, awards for acts of philanthropy, sponsorship, and patronage, optimising possible tax deductions in this area (tax assignment)

- promote cooperation between institutions founded by public administration and private-legal entities
- strengthen the state's other funding sources – the State Fund of Culture of the Czech Republic, the State Fund for the Support and Development of Czech Cinematography, taking full advantage of all these financial sources and endeavouring to find new ones
- ensure proper protection and administration of copyright
- financial loans and securities

c) legislative

direct

- develop instruments for the systematic observance of the the legislative norms relating to the field of arts, film and audiovisual work
- implement the act on some types of public support for culture and on amendments to certain related acts

indirect

- ensure co-participation in the preparation of new legislation (the Civic Code and the Labour Code, etc.) favourable to the arts – e. g. a public benefit statute
- address the issue of employing foreign employees in the Czech Republic, including social and health insurance issues
- promote the adoption of tax relief for selected business activities in the the arts, lower VAT rates
- promote the possibility of a reduction of the income tax base in exchange for artistic work or a reduction of estate duties through the donation of artistic works or the transfer of copyright to the collections of state institutions, foundation assets, or state funds
- promote application of the Act on Tax Assignment that takes into account the conditions of artistic activity
- promote the implementation of the Public-Private Partnership that takes into account conditions for artistic activity
- promote the implementation of partnerships between entities that takes into account the conditions for artistic activity

d) management

- include the development of the arts and culture in strategic development documents
- promote a consistent position among the bodies of state administration towards the fulfilment of the Cultural Policy and other conceptual documents
- ensure the professional and transparent evaluation of grant programmes
- ensure ongoing evaluations of individual grant programmes and governmental organisations
- strengthen international cooperation (the mobility of artists and works of art)
- promote life-long education for employees in the sphere of the arts (new technology)

e) methodical

- systematically promote the state's Cultural Policy and the Concept for More Efficient Support of the Arts in 2007–2013
- prepare sub-strategies and targeted strategies in the arts (strategies for the support of audiovisual work; a policy for art and education) with the participation of the professional community
- reinforce de-centralised planning, i. e. developing strategies at regional and municipal levels
- survey artistic activities and the activities of cultural entities focused on the creation, identification, presentation, interpretation, distribution, and documentation of the arts
- create relevant information databases accessible to the public locally and internationally
- promote and publicise examples of best practices, especially those in which the arts play a role in structural and regional development
- strengthen the opportunities for Czech artists and managers to participate in international educational projects and residency-type projects (artistic residencies, opportunities for gaining experience) and their further education
- monitor and evaluate economic multiplication effects generated by the arts
- examine the potential of the cultural and creative industries in the Czech Republic and formulate a concept for supporting the infrastructure of cultural industry in relation to the arts
- monitor the transfers made by lottery operators for public-benefit purposes in the sphere of culture

f) social

- promote the understanding that a healthy and functional artistic and cultural sphere has an important role to play in the development of civil society, and that it can fulfil this role on the condition that the arts are properly recognised and presented and are professionally mediated and adequately reflected in society
- make public the data and examples of best practices related to direct positive impact in the following areas³¹
 - economic growth and development – the influx of new financial sources as a result of co-productions and cooperation and multiplication effects (in the form of other services and the the improvement of their quality) in the areas of tourism and employment
 - education – the transmission of cultural values
 - health – in the areas of entertainment, leisure, the prevention of negative social phenomena, for example, preventing or combating drug abuse and criminality
 - social solidarity – the arts combat prejudices, are accessible to all social strata, generate situations for social gatherings, facilitate social communication, help integrate foreigners, and are a part of a country's national prestige and national image
- promote the understanding that live arts help to shape our identity and cultural heritage (which involves more than just monuments or museum collections)
- strive to work more actively with the public and search for new ways in which to appeal to other parts of the public
- officially recognise and reward important artistic achievements, events that contribute to the presentation and accessibility of the arts, and those who support the arts
- commemorate the anniversaries of prominent artistic figures and significant events and entities

³¹ Based on the document "Arts Advocacy Arguments", prepared by the International Federation of Arts Councils and Culture Agencies in 2003.

IV. Specific Tasks

a) STRENGTHENING THE ROLE OF THE ARTS IN SOCIETY

1. Develop the procedures, conditions and methods for obtaining cooperative financing.

Responsible body: MC in cooperation with the Association of Regions in the Czech Republic (Asociace krajů ČR) and the Union of Towns and Municipalities in the Czech Republic (Svaz měst a obcí ČR)

Term: 2008

Recommended: For use by bodies of state administration and regional authorities and other entities providing support in the field of the arts

Effect on the state budget: 0

2. Elaborate a methodology for subsidy programmes including evaluating methods for assessing their effectiveness.

Responsible body: MC

Term: 2007

Recommended: For use by bodies of state administration and regional authorities and other entities providing support in the field of the arts

Effect on the state budget: 0

3. Strengthen and optimise subsidy programmes.

Support for the production of diverse artistic forms with varied content, support for minority genres, innovative and experimental works, supporting the mobility of artists and arts projects, etc.

Responsible body: MC, Ministry of Regional Development, Ministry of Foreign Affairs

Term: Ongoing

Recommended for: the regional authorities on the opportunities to make use of the EU's Structural Funds and the Financial Mechanisms of the EEA and of Norway and other sources

Effect on the state budget: within the budgets of the MC, the Ministry of Regional Development, the Ministry of Foreign Affairs

4. Optimise the funds in other financial resources of the state and extra-budgetary sources.

Implementation of the amendment to the Act on the State Fund of the Czech Republic for the Support and Development of Czech Cinematography; implementation of a more effective instrument for collecting income from escheat, including motivational instruments for the assessment of copyright held by both state funds under the Ministry of Culture and the acquisition of others.

Searching for new sources of funding, especially in the form of lotteries, shares in the proceeds from licensing radio and television programmes, in the area of so-called indirect copyright liabilities, for example, from advertisements, the sale of devices for the reproduction and recording of data, from the sale of empty recording media or from the lending of recording media.

Responsible body: MC in cooperation with other institutions dealing with the collective administration of copyright

Term: ongoing

Effect on the state budget: 0

5. Strengthen the funding for research work in the arts to bring it to a level comparable to that in other social sciences; increasing the involvement of non-academic entities and researchers, who, in addition to biographic and encyclopaedic work, will be selected out of competitive bidding under the MC to focus on science and research projects oriented towards the interpretation and qualified reflection of the arts and its socio-economic aspects.

Procedure :

Operators in the arts will apply for grants for research and development projects (grants to be provided by: the MC, the Ministry of Education, Youth and Sport, the Grant Agency of the Academy of Sciences, the Grant Agency of the Czech Republic),

Tem: as per dates announced in the grant competitions and research projects

Recommended for: scientific and research departments specialising in the arts, so that their activities can focus on interpretation, critical reflection, and also the socio-economic aspects of the arts (see above)

Effect on the state budget: within the budgets of the MC and the Ministry of Education, Youth and Sport for institutional and targeted support for research and development

6. Formulate a concept for the arts and education, which will be focused on:

a) support for projects to apply contemporary arts in the education system

b) education through art outside the education system, primarily in theatres, galleries, libraries, arts centres, etc.

c) support for cultural skills, both practical (visual arts, music and drama skills...), and theoretical (an orientation in the realm of artistic expression, cultivating artistic perception, understanding the languages of art, the artistic potential of various media...)

Responsible bodies: MC and the Ministry of Education, Youth and Sport, as part of the recommendations to post-secondary schools

Term: 2009

Effect on the state budget: 0

7. Support the creation and operation of information databases about artists, institutions, collections, art workshops, in order to facilitate the exchange of information within the system of the arts, culture and society, and at an international level, irrespective of linguistic or administrative boundaries. Completing the catalogue of collection items for the Central Collections Register with new items to encompass art of the 20th and 21st centuries.

Responsible body: MC

Term: ongoing

Effect on the state budget: within the budget of the MC

8. Obtain more informative economic-statistical data. Make better use of data from the Czech Statistical Office in a newly introduced satellite account on not-for-profit organisations, and introduce the appropriate economic activity classifications (OKEČ – Czech

version of NACE) and the international classification of activity of not-for-profit organisations (ICNPO) for use among cultural organisations.

Responsible body: MC in cooperation with the Czech Statistical Office, NIPOS and the Theatre Institute

Term: ongoing

Effect on the state budget: 0

9. Determine the potential of the cultural industry in the Czech Republic in relation to the arts, with the aim of uncovering possible means and methods of increasing the productivity, export, and competitiveness of the country's cultural industry.³²

Responsible body: MC

Term: 1st stage, i. e. to determine the potential of the cultural industry in the Czech Republic (2008), ongoing thereafter

Effect on the state budget: within the budget of the MC

10. Establish an Arts Council that will serve as the advisory, initiatory, and coordinating body of the Ministry of Culture. The task of the Arts Council will be mainly overseeing the fulfilment of the Concept for More Efficient Support for the Arts, proposing and initiating strategic, organisational, and legislative measures and provisions relating to the arts, negotiating, assessing, consulting, and preparing official opinions and recommendations relating to the arts, monitoring the work of organisations founded by the MC in the arts, and stimulating ideas for research on theoretical and practical issues in the sphere of the arts, etc.

Responsible body: MC

Term: 2007

Effect on the state budget: 0

11. Support media focusing on artistic production and the reflection of such work, and doing so primarily through the provision of information and funding.

Responsible body: MC

Term: ongoing

Effect on the state budget: within the budget of the MC

12. Cooperate on the formulation of methodological guidelines aimed at supporting professional architectural work and its integration into public life.

Responsible body: MC in cooperation with the Ministry for Regional Development, the Czech Chamber of Architects, and other professional organisations

Term: 2007

Effect on the state budget: 0

³² See the National Sustainable Development Strategy of the Czech Republic (Resolution No. 1242 of the Government of the Czech Republic dated 8th December 2004) and the Economic Growth Strategy Art. 3.3.3.4 on improving the conditions for investment and the provision of services in the sphere of cultural industry (Resolution No. 984 of the Government of the Czech Republic dated 20th July 2005).

b) PROTECTION AND ENHANCEMENT OF ARTISTIC DIVERSITY AND CREATIVITY WITH RESPECT TO REDUCTION OF THE NEGATIVE INFLUENCES OF CONSUMER SOCIETY

13. Launch a grant programme for the presentation of contemporary visual art and architectural work in galleries, museums and exhibition halls, which systemically complement the Programme for the Support of Professional Theatres and Symphony Orchestras and Choirs.

Responsible body: MC

Term: 1st stage, i. e. preparation of the programme and subsequently the announcement of the programme (2007), ongoing thereafter

Effect on the state budget: within the budget of the MC

14. Develop and implement a comprehensive concept of support for audiovisual work, which will define the necessary instruments to achieve in particular the following goals:

- Make better use of creative potential and support free artistic expression
- Establish the conditions for re-investing talent and funding in the area of audiovisual work
- Strengthen the role of individual entities in the infrastructure of audiovisual work as instruments of cultural policy, i. e. identify the competences of individual entities focusing on areas that require a specific method of support

Responsible body: MC in cooperation with representatives from other organisations

Term: 2007

Effect on the state budget: within the budget of the MC

15. Launch a programme of artistic residencies and study scholarships for artists and scholars for the purpose of carrying out work on artistic projects in the fields of literature, theatre, dance, music, the visual arts and architecture, film, and for critical reflection in these fields.

Responsible body: MC

Term: 1st stage, i. e. preparation of the programme and subsequently the announcement of the programme (2007), ongoing thereafter

Effect on the state budget: within the budget of the MC

16. Support the continuing education of artists, managers in the arts, administrators, and animators through grant programmes, which will include support for participation in workshops and seminars primarily by covering the fees and costs connected with participation. Support the organisation of these kinds of projects by entities experienced in the field of art management, including post-secondary schools. Provide more opportunities for life-long education.

Responsible body: MC in cooperation with the Ministry of Labour and Social Affairs and the Ministry of Education, Youth and Sport within the framework of its recommendations to post-secondary schools

Term: 1st stage, i. e. preparation and development of the grant programmes (2007), ongoing thereafter

Effect on the state budget: within the budgets of the MC, the Ministry of Labour and Social Affairs, and the Ministry of Education, Youth and Sport

17. Support the preservation of works of art and public access to them – including audiovisual and electronic archives and other archives of institutions and entities specialising in the live arts and in collection work. Ensure they are functional enough to satisfy current needs and for use by future generations. Contribute to finding a solution to disputed points relating to the holding and use of audiovisual works by the company Short Films Prague (Krátký film Praha).

Responsible body: MC in cooperation with other institutions specialising in archival and documentation work

Term: ongoing

Effect on the state budget: within the budget of the MC

18. Optimise the Programme for Support for Acquisition Work of Museums and Galleries Founded by the Ministry of Culture, from 2004 to 2008 (Resolution No. 1069 of the Government of the Czech Republic dated 3rd November 2004) to facilitate the acquisition of works of art by contemporary Czech and foreign artistic collections owned by the Czech Republic. Update the programme for the 2009–2013 programme period.

Responsible body: MC

Term: 1st stage 2007–2008, in accordance with Resolution No. 1069 of the Government of the Czech Republic dated 3rd November 2004, then 2009–2013

Effect on the state budget: within the budget of the MC

c) GUARANTEEING PUBLIC ACCESS TO THE ARTS (EQUAL ACCESS)

19. Expand and apply the criteria for assessing the public accessibility of the arts to year-round exhibition functions under a new programme of support.

Apply criteria of effectiveness (a minimum number of productions/events) and artistic quality (a requisite diversity of artistic genres, the share of contemporary art by young artists, works for children and young people), and economic criteria (efficiency, a minimal amount of self-sufficiency) and the principle of multi-source funding from public budgets to establish equal access to the country's cultural wealth for all citizens, and to facilitate access for disadvantaged social groups, etc.

Responsible body: MC in cooperation with other entities (Theatre Institute, NIPOS, etc.)

Term: 2007

Effect on the state budget: 0

20. Implement artistic projects in the approach to the integration of foreign nationals into Czech society, participate in the formulation and application of migration and integration policy through artistic and cultural institutions.

Responsible body: MC in cooperation with other entities

Term: ongoing

Effect on the state budget: within the budget of the MC

21. Formulate a methodology for the management and for evaluation of work by existing artistic governmental organisations under the MC in connection with the detailed expenditure blocks procedure prepared by the Ministry of Finance, according to which the introduction of elements of programme funding should be extended to all expenditures in the state budget.

Responsible body: MC

Term: 2007

Effect on the state budget: 0

22. Analysis of the provision of cultural services in the arts through organisations founded by the state.

Responsible body: MC

Term: 2008

Effect on the state budget: 0

d) STRENGTHENING INFRASTRUCTURE AND INVESTMENT SUPPORT FOR CULTURAL INSTITUTIONS

23. Mapping the state and circumstances of existing cultural and artistic organisations, formulating criteria for evaluation projects focusing on investment and support for investment within the framework of programme funding through cooperation between ministries, between regions, and in relation to possible use of the EU Structural Funds.

Responsible body: MC, Ministry of Regional Development

Term: 1st stage, i. e. surveying the situation and formulating criteria 2007, ongoing thereafter

Recommended: for use by bodies of state administration and regional authorities, and other entities providing support in the field of the arts

Effect on the state budget: within the budgets of the MC and the Ministry of Regional Development

24. Support for new activities among not-for-profit organisations, which can bridge the gaps in the existing infrastructure for the provision of services in the arts and specific artistic professions at the practical and theoretical levels.

Responsible body: MC

Term: ongoing

Effect on the state budget: within the budget of the MC

e) STRENGTHENING THE PRESENCE AND PRESENTATION OF CZECH ARTS ABROAD AND FOSTERING INTERNATIONAL COOPERATION

25. Transparently direct, prepare and coordinate the presentation of Czech arts at representative international projects such as biennales, large international festivals, fairs, etc. Introduce the practice of regular assessment and ongoing surveys of the participation of state and non-state entities in important international events through a Report on International Cooperation in the Arts.

Responsible body: MC, Ministry of Foreign Affairs, Ministry of Industry and Trade, NIPOS, Theatre Institute, Czech Centres (Správa českých center), Czech Film Centre (České filmové centrum), Union of Czech Booksellers and Publishers, and other entities

Term: ongoing

Recommended: to the regional authorities to compose strategies for presenting and exporting art outside the Czech Republic

Effect on the state budget: MC, Ministry of Foreign Affairs, Ministry of Industry and Trade

26. Strengthen and optimise grants for projects accepted from abroad, projects supported by EU programmes, aimed at improving and promoting the presentation of Czech arts abroad.

Responsible body: MC, Ministry of Foreign Affairs and the Czech Centres, EU community programmes, Ministry of Agriculture (Leader+ programme), Ministry of Regional Development

Term: ongoing

Recommended: for the regional authorities to support projects involving cooperation with entities outside the Czech Republic

Effect on the state budget: within the budget of the MC

27. Create a support programme aimed at launching and establishing new forms of international cooperation, and at preparing specific projects and international co-productions for their implementation by operators working in the arts.

Responsible body: MC

Term: 2007

Recommended: for the regions

Effect on the state budget: within the budget of the MC

28. Support the participation of the national branches in the work and activities of international non-governmental organisations in the arts. Strengthen the integration of Czech entities in EU networks by partially covering the costs connected with their participation in working meetings, and help increase their participation in international projects. Formulate a methodology for evaluating the integration of Czech entities in international associations and networks and survey the situation on an ongoing basis as part of the Report on the International Cooperation in the Arts.

Responsible body: MC in cooperation with other entities

Term: 2007 (to develop the methodology and draw up the first Report)

Effect on the state budget: within the budget of the MC

29. Expand the knowledge, information and awareness about Czech arts through Czech artists, theoreticians, managers, pedagogues, visiting scholars, journalists, Czech language teachers, translators, etc., working abroad in the short term, the long term, and indefinite periods.

Responsible body: MC, Ministry of Education, Youth and Sport, Ministry of Foreign Affairs

Term: ongoing

Effect on the state budget: within the budgets of the MC, the Ministry of Foreign Affairs, and the Ministry of Education, Youth and Sport

V. Financial Requirements from the State Budget

The basic instrument for the fulfilment of the Concept are the state governmental organisations and the programmes of support for artistic activities run by public and private entities providing public cultural services and focusing primarily on:

1. the preservation and enhancement of artistic diversity
2. ensuring equal access to the arts for all citizens
3. strengthening and enhancing the role of the arts in society
4. promoting the presentation of Czech arts abroad

For the coming period it is essential to ensure that the work of governmental organisations and the activities of existing support programmes maintain their continuity, that programme funding is augmented, and that the methodology and tools and the terms and volume of funding are established and specified so that that goals set out in this Concept can be achieved. Support for the work of state governmental organisations will be tied to the introduction of new methods of managing and evaluating work and activities. Programme support will be tied to the application of the methods and instruments that are announced and the establishment of requisite conditions.

The financial requirements for implementing the Concept have been determined on the basis of previous expenditures and are projected for the period up to 2013. In the case of those programmes in which grant recipients are required to co-finance projects out of their budgets expenditure forecasts have been worked out on the basis of a predicted contribution from the recipient's budget in the amount of 30% or more.

An important source of support in the process of implementing the Concept are the various sources and programmes of the European Union that entities providing cultural services are also entitled to draw on, in particular the community programmes of Culture 2007, Media, and the Structural Funds. The MC will provide systematic support for the preparation of such projects.

The financial demands on the state budget are specified in **optimal levels**. Read costs will depend on the capacity of the state budget and the budget chapter for the Ministry of Culture, and the execution of the tasks outlined in the Concept will be implemented correspondingly and updated and modified on an ongoing basis. The costs (in millions of Czk) are broken down in the tables below (figures only for the MC).

Financial Requirements from the State Budget

Table 1. State Governmental Organisations (in millions of Czk)

	2006					2007				
	Material costs	Person. costs	Operating subsidy	Indep. revenue	Total budget	Material costs	Person. costs	Operating subsidy	Indep. revenue	Total budget
State Opera	13 502	116 750	130 252	107 970	238 222	14 474	116 750	131 224	109 913	241 137
National Theatre	77 265	351 688	428 953	219 720	648 673	84 097	351 688	435 785	220 016	655 801
Laterna Magika	11 051	0	11 051	48 949	60 000	13 000	0	13 000	48 500	61 500
Prague Philharmonic Choir	-1 245	27 102	25 857	13 515	39 372	-1 194	27 102	25 908	13 758	39 666
Czech Philharmonic Orchestra	4 003	67 898	71 901	89 450	161 351	4 636	67 898	72 534	91 060	163 594
National Film Archives	-1 851	30 187	28 336	32 300	60 636	-820	30 187	29 367	32 000	61 367
Theatre Institute	1 651	15 438	17 089	15 460	32 549	1 783	15 438	17 221	15 738	32 960
NIPOS	8 485	19 251	27 736	967	28 703	8 694	19 251	27 945	985	28 930
Total	112 861	628 314	741 175	528 331	1 269 506	124 670	628 314	752 984	531 971	1 284 955

	2008					2009				
	Material costs	Person. costs	Operating subsidy	Indep. revenue	Total budget	Material costs	Person. costs	Operating subsidy	Indep. revenue	Total budget
State Opera	15 481	116 750	132 231	111 892	244 123	16 524	116 750	133 274	113 906	247 180
National Theatre	88 095	351 688	439 783	223 316	663 099	92 219	351 688	443 907	226 666	670 573
Laterna magika	13 603	0	13 603	49 373	62 976	14 226	0	14 226	50 262	64 487
Prague Philharmonic Choir	-1 140	27 102	25 962	14 006	39 968	-1 083	27 102	26 019	14 258	40 277
Czech Philharmonic Orchestra	5 293	67 898	73 191	92 699	165 891	5 977	67 898	73 875	94 368	168 242
National Film Archives	428	30 187	30 615	31 500	62 115	1 694	30 187	31 881	31 000	62 881
Theatre Institute	1 921	15 438	17 359	16 022	33 380	2 063	15 438	17 501	16 310	33 811
NIPOS	8 908	19 251	28 159	1 003	29 162	9 128	19 251	28 379	1 021	29 400
Total	132 590	628 314	760 904	539 810	1 300 714	140 748	628 314	769 062	547 790	1 316 852

	2010					2011				
	Material costs	Person. costs	Operating subsidy	Indep. revenue	Total budget	Material costs	Person. costs	Operating subsidy	Indep. revenue	Total budget
State Opera	17 604	116 750	134 354	115 956	250 310	18 722	116 750	135 472	118 043	253 515
National Theatre	96 473	351 688	448 161	230 066	678 226	100 859	351 688	452 547	233 517	686 063
Laterna magika	14 869	0	14 869	51 166	66 035	15 533	0	15 533	52 087	67 620
Prague Philharmonic Choir	-1 024	27 102	26 078	14 515	40 593	-961	27 102	26 141	14 776	40 917
Czech Philharmonic Orchestra	6 686	67 898	74 584	96 066	170 651	7 423	67 898	75 321	97 796	173 117
National Film Archives	2 979	30 187	33 166	30 500	63 666	4 283	30 187	34 470	30 000	64 470
Theatre Institute	2 210	15 438	17 648	16 604	34 252	2 363	15 438	17 801	16 902	34 703
NIPOS	9 353	19 251	28 604	1 039	29 644	9 584	19 251	28 835	1 058	29 893
Total	149 150	628 314	777 464	555 912	1 333 376	157 805	628 314	786 119	564 179	1 350 298

	2012					2013				
	Material costs	Person. costs	Operating subsidy	Indep. revenue	Total budget	Material costs	Person. costs	Operating subsidy	Indep. revenue	Total budget
State Opera	19 879	116 750	136 629	120 168	256 798	21 078	116 750	137 828	122 331	260 159
National Theatre	105 381	351 688	457 069	237 020	694 088	110 043	351 688	461 731	240 575	702 306
Laterna magika	16 218	0	16 218	53 025	69 243	16 925	0	16 925	53 979	70 905
Prague Philharmonic Choir	-896	27 102	26 206	15 042	41 248	-827	27 102	26 275	15 313	41 588
Czech Philharmonic Orchestra	8 188	67 898	76 086	99 556	175 642	8 982	67 898	76 880	101 348	178 228
National Film Archives	5 605	30 187	35 792	29 500	65 292	6 948	30 187	37 135	29 000	66 135
Theatre Institute	2 521	15 438	17 959	17 207	35 166	2 685	15 438	18 123	17 516	35 639
NIPOS	9 821	19 251	29 072	1 077	30 149	10 063	19 251	29 314	1 096	30 410
Total	166 717	628 314	795 032	572 594	1 367 626	175 896	628 314	804 210	581 159	1 385 369

	2007	2008	2009	2010	2011	2012	2013	Celkem
Operating subsidy	752 984	760 904	769 062	777 464	786 119	795 032	804 210	5 445 774
Indep. revenue	531 971	539 810	547 790	555 912	564 179	572 594	581 159	3 893 416
Total SO	1 284 955	1 300 714	1 316 852	1 333 376	1 350 298	1 367 626	1 385 369	9 339 190

Note: The calculations are based on the proposed state budget for Chapter 334 for the Ministry of Culture in 2006, approved by the Chamber of Deputies. The increase in the contribution for 2007 compared to 2006 includes the increase in material costs of organisations by an estimated annual inflation rate of 2.4% after deducting the increase of independent revenue by 1.8% and in the case of the National Theatre by 1.5% taking into account the increased use of the Funds. An increase in personnel costs is not anticipated, as this is set by a target figure of the Ministry of Finance, and it is also financed by the increase in expenditures in the chapter in the given year. The increase in independent revenue is not identical to the increase in the inflation rate owing to the fact that the independent revenue of organisations includes the adjustment clearings of the funds, reversionisation, etc. The increase in the contribution for 2008 is based on figures calculated for 2007, etc.

Table 2. Cultural Activities Programme (in millions of Czk)

State budget	2007	2008	2009	2010	2011	2012	2013	2007–2013
Cult. activities of prof. arts (theatre, music, literature, dance, visual arts, architecture, film)	283.5*	274.5	330.0**	326.5	390.5*	398.0	406.0	2 409.0
Cult. activities abroad	40.0	43.0	47.0**	43.0	44.0	45.0	45.0	307.0
Cult. activities of non-prof. arts	41.6	48.7	52.8	57.4	61.5	66.0	68.5	396.5
Contribution of the subsidy recipient	80.0	155.0	180.2	208.0	210.0	218.0	222.0	1 273.2
Total	445.1	521.2	610.0	634.9	706.0	727.0	741.5	4 385.7

* Increased requirements in connection with the Prague Quadriennale (2007, 2011).

** Increased need in connection with projects in connection with the Czech Republic's Presidency of the EU.

Table 3. Stipend Programme in the Arts (in millions of Czk)

Artistic and study stipends	2007	2008	2009	2010	2011	2012	2013	2007–2013
State budget	9.5	10.5	12.5	14.5	16.5	19.5	22.5	105.5
Contribution of the subsidy recipient	4.0	4.5	8.2	6.2	7.0	8.3	9.6	45.2
Total	13.5	15.0	17.7	20.7	23.5	27.8	32.1	150.7

Table 4. Programme of State Support for Professional Theatres, Symphony Orchestras and Choirs (in millions of Czk)

Theatres, orchestras, choirs	2007	2008	2009	2010	2011	2012	2013	2007–2013
State budget	120	125	130	135	140	145	150	945
Contribution of the subsidy recipient (including the contributions of the founder – regional authorities)	1 920	2 000	2 080	2 160	2 240	2 320	2 400	15 120
Total	2 040	2 125	2 210	2 295	2 380	2 465	2 550	16 065

Table 5. Programme of State Support for Galleries, Museums, and Exhibition Halls (in millions of Czk)

Galleries, museums and exhibition halls	2007	2008	2009	2010	2011	2012	2013	2007–2013
State budget	30	35	40	45	50	55	60	315
Contribution of the subsidy recipient (including the contributions of the founder – regional authorities)	480	560	640	720	800	880	960	5 040
Total	510	595	680	765	850	935	1 020	5 355

Table 6. Programme of Support for the Integration of the Roma Community
(in millions of Czk)

Project support	2007	2008	2009	2010	2011	2012	2013	2007–2013
State budget	3	3	3.5	4	4.5	5	5	28
Contribution of the subsidy recipient	0.9	0.9	1.1	1.3	1.5	1.7	1.7	9
T o t a l	3.9	3.9	4.6	5.3	6	6.7	6.7	37.1

Table 7. Programme of Support for the Cultural Activities of Ethnic Minorities
(in millions of Czk)

Project support	2007	2008	2009	2010	2011	2012	2013	2007–2013
State budget	15	15	16	17	18	19	20	120
Contribution of the subsidy recipient	5	5	6	7	7.7	8.1	8.5	9
T o t a l	20	20	22	24	25.7	27.1	28.5	167.3

Table 8. Programme of Support for the Dissemination and Reception of Information in the Languages of Ethnic Minorities (in millions of Czk)

Project support	2007	2008	2009	2010	2011	2012	2013	2007–2013
State budget	40	40	40	45	45	45	45	300
Contribution of the subsidy recipient	12	12	12	14	14	14	14	92
T o t a l	52	52	52	59	59	59	59	392

Table 9. Programme for Research and Development (in thousands of Czk)

MC expenditures on research programmes	2007	2008	2009	2010	2011	Total
Professional arts sub-programme	2 365	2 173	2 173	2 273	2 376	11 360
Socio-economic analyses sub-programme	1 100	1 000	1 000	900	800	4 800
Non-professional arts sub-programme	1 136	1 231	1 232	1 231	595	5 425
Audio-visual sub-programme	0	200	400	400	100	1 100
Programme expenditures are approved to 2011; government materials for the period of 2012–2013 are to be approved.						

Table 10. State Fund of the Czech Republic for the Support and Development of Czech Cinematography and the State Fund of Culture (in millions of Czk)*

* For a comprehensive account the optimal development of funds **outside** the state budget administered by the state funds is indicated.

State Fund of the CR for the Support and Development of Czech Cinematography	2007	2008	2009	2010	2011	2012	2013	2007–2013
Support	600	650	700	750	750	750	750	4 950
Contribution of the subsidy recipient	600	650	700	750	750	750	750	4 950
T o t a l	1 200	1 300	1 400	1 500	1 500	1 500	1 500	9 900
State Fund of Culture of the CR	2007	2008	2009	2010	2011	2012	2013	2007–2013
Support	4	4	4	4	4	4	4	28
Contribution of the subsidy recipient	2	2	2	2	2	2	2	14
T o t a l	6	6	6	6	6	6	6	42

Other financial resources in support of the arts are spent by other ministries through their subsidy titles (Ministry of Education, Youth and Sport, Ministry of Foreign Affairs, Ministry for Regional Development). However, exact figures cannot be provided because support for entities providing public services in the sphere of the arts form a part of broader bulk subsidies (e. g. Fund for the Development of Post-secondary Schools, Programmes of the Ministry for Regional Development). For the effective fulfilment of the Concept it can be assumed that certain financial resources will be spent out of the other public budgets, especially those of the municipalities and the regions. However, it is not possible to specify the exact figures, as for the regional authorities this material has the character of a recommendation and does not establish mandatory expenditures.

Appendices

I. Expert and Working Groups

The proposed Concept for More Efficient Support of the Arts in 2007–2013 was prepared in cooperation with the following groups of experts:

Inter-disciplinary expert committees (appointed by the Deputy Minister)

Miroslav Balaščík – literary historian and theoretician, editor-in-chief of *Host* magazine, lecturer at the Institute of Czech Literature, Faculty of Arts, Masaryk University

Michael Bielický – artist, lecturer at the New Media studio at the Academy of Fine Arts

Magdalena Bílková-Tůmová – flautist, lecturer, winner of the Prague Spring competition, head of the Syrinx ensemble

Jan Burian – theatre director, director of the theatre J. K. Tyl in Pilsen, Chair of the Association of Professional Theatres

Ondřej Černý – director of the Theatre Institute, head of the project Concept for More Efficient Support of the Arts in 2007–2013

Jan Dvořák – theatre professional, publisher (Pražská scéna), lecturer in the Department of Production at the Academy of Dramatic Arts

Jiří Hlaváč – composer, clarinettist, musical arranger, dean of the Music Faculty of the Academy of Performing Arts, chair of the Association of Musical Artists and Scholars

Jiří T. Kotalík – historian of art and architecture, lecturer at the Academy of Fine Arts

Yvona Kreuzmannová – director of the festival and civic association Tanec Praha

Lenka Lázniovská – head of the Division for Non-professional Artistic Activities on the authorisation of the MC responsible for state representation in the sphere of the non-professional arts (ARTAMA) under NIPOS

Zdeněk Lyčka – director of the Department of Cultural and Compatriot Relations, Ministry of Foreign Affairs

Antonín Matzner – musicologist, music commentator, producer, artistic director of the Prague Spring festival

Elvíra Němečková – director of the Kylián Foundation

Martina Pachmanová – curator and art critic, vice chancellor of the Academy of Applied Arts

Pavla Petrová – to August 2004 director of the Department of Arts and Libraries at the Ministry of Culture (currently on maternity leave)

Michal Prokop – musician, politician, moderator, and chair of the Czech Radio Council

Marta Smolíková – director of ProCulture/Open Society o. p. s., author/coordinator of the Concept for More Efficient Support of the Arts in 2007–2013 project

Ilja Šmíd – director of the Prague Philharmonia, chair of the Association of Symphony Orchestras CR

František Zborník – director of the National Information and Consulting Centre for Culture (NIPOS)

Josef Žák – lecturer at the Department of the Theory of Culture (Culture Studies) Faculty of Arts, Charles University, head of the regional office of OSA

Specialised Working Groups

Theatre

Ondřej David – theatre director

Jan Dvořák – theatre professional, publisher (Pražská scéna), lecturer at the Department of Production at the Drama Faculty of the Academy of Performing Arts

Josef Herman – critic, lecturer at the Department of Drama Studies, Faculty of Arts, Charles University, chair of the Musical Theatre Association

Zuzana Jindrová – head of the Information and Documentation Department of the Theatre Institute

Karel Král – theatre critic, editor-in-chief of *Svět a divadlo* (The World and Theatre)

Yvona Kreuzmannová – director of the festival and civic association Tanec Praha

Lukáš Matásek – head of the Agent Department of Theatre and Literary Agency

Jana Návratová – dance critic, editor-in-chief of *Taneční zóna* magazine (Dance Zone)

Bohumil Nekolný – analyst at the Theatre Institute

Nataša Zichová – Department of Arts and Libraries at the MC

Music

Mikoláš Bek – musicologist, vice chancellor of Masaryk University

Lenka Dohnalová – secretary of the Czech Music Council

Anna Chorvátová – Department of Arts and Libraries at the MC

Antonín Matzner – musicologist, music commentator, producer, artistic director of the Prague Spring festival

Miroslav Pudlák – composer and conductor, director of the Music Information Centre

Jiří Štílec – musical arranger, lecturer at the Music Faculty of the Academy of Performing Arts, owner of the Arco Diva agency

Jan Špaček – music critic and scholar, lecturer at the Protestant Theological Faculty, Charles University and the Institute of Musicology, Faculty of Arts, Masaryk University

Literature

Miroslav Balaščík – literary historian and theorist, editor-in-chief of *Host* magazine, lecturer at the Institute of Czech Literature, Faculty of Arts, Masaryk University

Ivan Binar – writer, translator, chair of the Council of Arts Societies

Bohumil Fišer – Department of Arts and Libraries at the MC

Vladimír Karfík – literary critic and historian

Aleš Lederer – publisher (Prostor)

Květuše Nováková – Department of Arts and Libraries at the MC

Visual Arts

Dagmar Fialová – director of the Association of Museums and Galleries CR

Irena Fialová – architect, editor at Zlatý řez Press and Publishers

Vít Havránek – curator at the City Gallery Prague, Tranzit initiative

Radek Horáček – director of the Brno House of Arts, lecturer at the Pedagogical Faculty, Masaryk University

Helena Koenigsmarková – director of the Museum of Applied Arts in Prague

Roman Musil – Department of Arts and Culture at the MC

Martina Pachmanová – curator and art critic, vice chancellor of the Academy of Applied Arts

Marek Pokorný – critic and curator, director of the Moravian Gallery in Brno

Přemysl Reibl – director of the National Museum of Agriculture, member of the committee of the Association of Museums and Galleries CR, co-author of an EU Structural Funds project

Film

Michal Bregant – dean of the Film and TV School of the Academy of Performing Arts

Jana Cerník – Czech Film Centre

Richard Fiala – Department of Cinematography and State Funds at the MC

Jaromír Hník – member of the board of the ANifest festival

Jiří Králík – director of City Cinemas of Uherské Hradiště and the Summer Film School in Uherské Hradiště

Jan Kraus – actor, moderator, chair of the Czech Film and Television Association (FITES)

Daniela Kučmášová – director of Media Desk CZ

Vladimír Opěla – director of the National Film Archives

Andrea Prengňhová – film director, founder of the Institute of Documentary Film

Pavel Strnad – producer (Negativ s. r. o.), chair of the Association of Audiovisual Producers

Hana Tomášková – Department of Media and Audiovisuals at the MC

Non-professional Arts

Magdalena Bílková-Tůmová – flautist, lecturer, winner of the Prague Spring competition, head of the Syrinx ensemble

Elvíra Němečková – director of the Kylián Foundation

Lenka Láznovská – head of the Division for Non-professional Artistic Activities on the authorisation of the MC responsible for state representation in the sphere of the non-professional arts (ARTAMA) under National Information and Consulting Centre for Culture (NIPOS)

František Zborník – director of the National Information and Consulting Centre for Culture (NIPOS)

Foreign Collaboration and presentation of Czech art abroad

Jan Bondy – director of the Czech Centres

Blanka Čermáková – director of the Department of Arts and Libraries at the MC

Ondřej Černý – director of the Theatre Institute

Jindřich Fryč – Department of International Relations at the Ministry of Education, Youth and Sport

Anna Chorvátová – Department of Arts and Libraries at the MC

Roman Kallup – Foreign Department at the MC

Jaromíra Mizerová – Foreign Department at the MC

Zdeněk Lyčka – director of the Department of Cultural and Compatriot Relations, Ministry of Foreign Affairs

Pavla Petrová – to August 2004 director of the Department of Arts and Libraries at the Ministry of Culture (currently on maternity leave)

Marta Smolíková – director of ProCulture/Open Society o. p. s., author/coordinator of the Concept for More Efficient Support of the Arts in 2007–2013 project

Petra Smolíková – Deputy Minister at the MC

Eva Žáková – Czech Cultural Contact Point – Culture 2000 Programme

II. Share of Total Public Expenditures on Culture by Type of Administrative Division

Country	Year	Government	Regions/provinces	Towns and municipalities
Austria	1999	43.5 %	21.8 %	25.6% towns 9% Vienna
	2000	33.3 %	29.5 %	28.7% towns 8.5% Vienna
Belgium – Flemish region and community	1995	44 %	6 %	45 %
	1999	41.8 %	5.6 %	52.6 %
	2002	47.7 %	10.8 %	41.5 %
Bulgaria	1999	63.7 %	N/A	32 %
	2002	25 %	N/A	75 %
	2004	79.47 %	N/A	20.53 %
Canada	1990/1991	49 %	30 %	21 %
	2000/2001	45.4 %	31.2 %	23.4 %
	2001/2002	45 %	29 %	26 %
Croatia	1999	38 %	N/A	62 %
	2000	43 %	N/A	57 %
Estonia	1997	56 %	3 %	41 %
	2002	58.8 %	2.5 %	38.7 %
	2003	60 %	2.2 %	37.8 %
Finland	1997	49 %	N/A	51 %
	2000	58.8 %	N/A	41.2 %
	2001	56.3 %	N/A	43.7 %
Italy	1990	54 %	16.4% Regions 2.1% Provinces	27.5 %
	2000	52.2 %	14.6% Regions 3.0% Provinces	30.2 %
Latvia	2002	76 %	N/A	24 %
	2004	63.7 %	N/A	36.3 %

Lithuania	1999	57.0 %	N/A	43 %
	2003	56.3 %	N/A	43.7 %
Moldova	2000	41.8 %	N/A	58.2 %
	2001	54.1 %	N/A	45.9 %
	2003	49.4 %	N/A	50.6 %
Poland	2001	22.1 %	19.8% Voivodships 24.1% Provinces	34.1 %
	2002	18.9 %	19.6% Voivodships 25.5% Provinces	36 %
	2003	20.6 %	20.1% Voivodships 27.5% Provinces	31.8 %
	2004	21.9 %	20.0% Voivodships 27.6% Provinces	30.6 %
Portugal	1995	46.7 %	N/A	53.3 %
	2003	37.6 %	N/A	62.4 %
Russia	2002	53 %	47	N/A
	2003	32 %	33 %	35 %
San Marino	2005	92 %	N/A	8 %
Serbia and Montenegro	1994	44 %	0.4 %	55.6 %
	1998	45 %	0.94 %	54.06 %
	2000	45.8 %	0.63 %	53.57 %
Slovenia	1996	69 %	N/A	31 %
	1998	67 %	N/A	33 %
	2000	61 %	N/A	39 %
	2003	64 %	N/A	36 %
Sweden	1994	44.2 %	7.5 %	48.4 %
	1996	48.4 %	7.3 %	47.5 %

Sweden	1998	47.4 %	8.0 %	44.6 %
	2000	47.1 %	9.9 %	43 %
	2002	46 %	10 %	44 %
UK – England	2003/2004	34 %	-	66 %
UK – Scotland	2003/2004	38 %	-	62 %
UK – Wales	2003/2004	79 %	-	21 %
UK – Northern Ireland	2003/2004	N/A	-	N/A
Ukraine	2002	39.4 %	22.3 %	38.3 %
	2003	29 %	34 %	37 %
	2004	35.8 %	27.6 %	36.6 %

Source: Council of Europe/ERICarts, Compendium of Cultural Policies and Trends in Europe, 7th edition, 2006, available at www.culturalpolicies.net.

	Year	Chap. 334 MC	Regions	Districts	Municipalities and Towns including Prague
Czech Republic	2000	37 %	x	10 %	53 %
	2001	31 %	2.5 %	11 %	55 %
	2002	30 %	5.4 %	9.2 %	55 %
	2003	35 %	10 %	x	54 %
	2004	34 %	10 %	x	55 %

Source: Data – NIPOS, table and calculations – ProCulture/Open Society o. p. s.